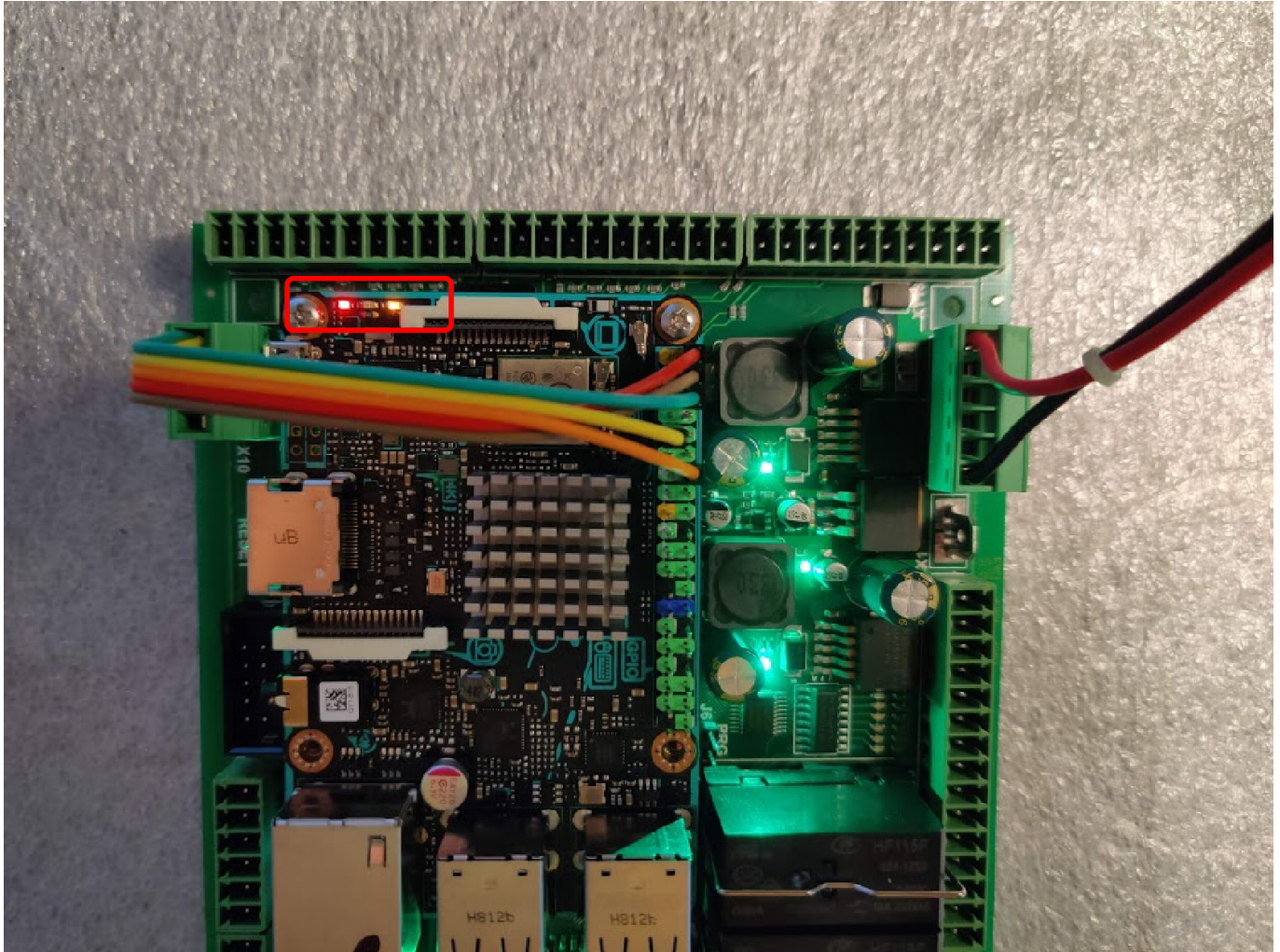


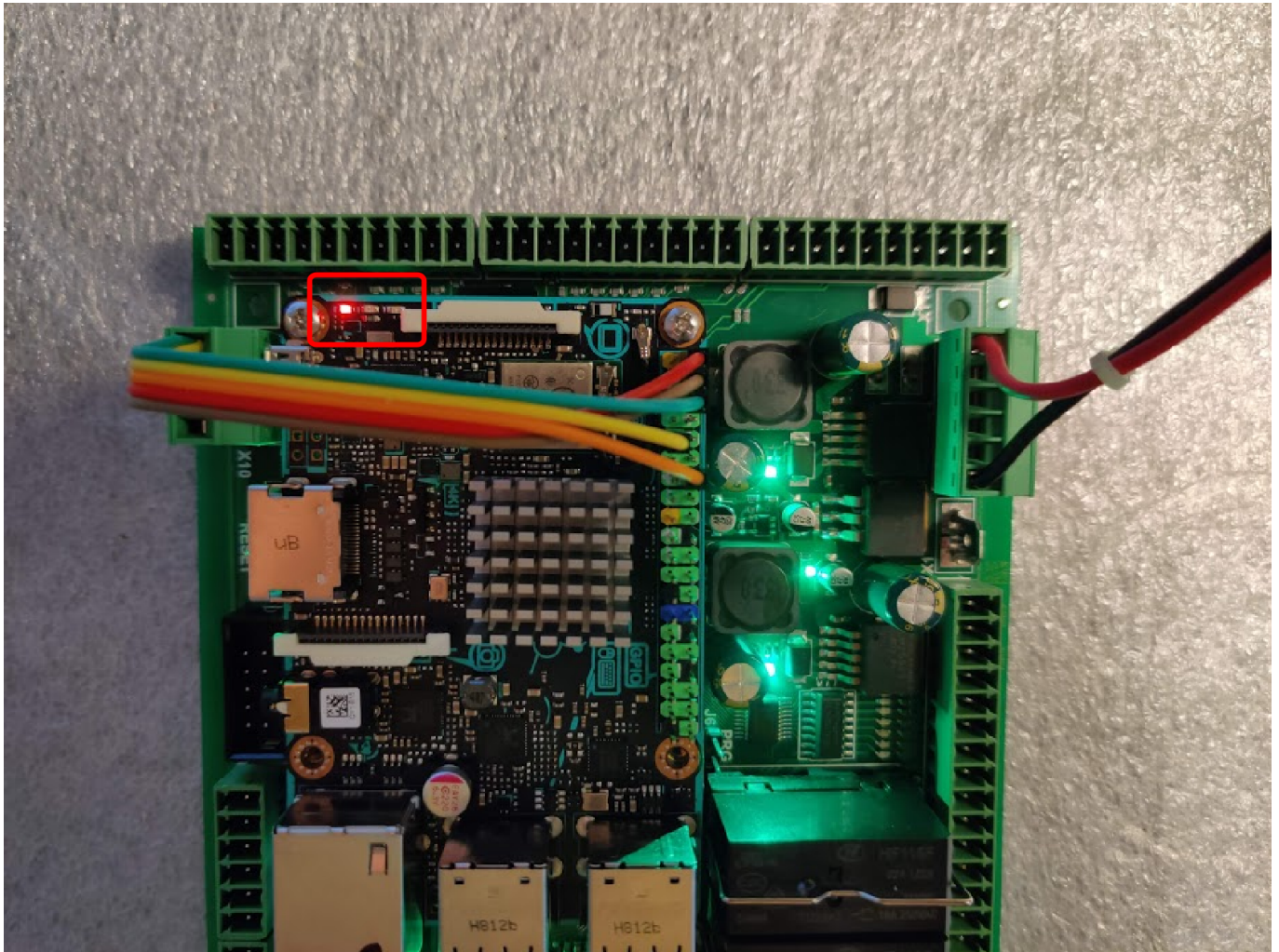
# ASUS Tinkerboard hardware troubleshooting

## ASUS TinkerBoard/ET6 controller

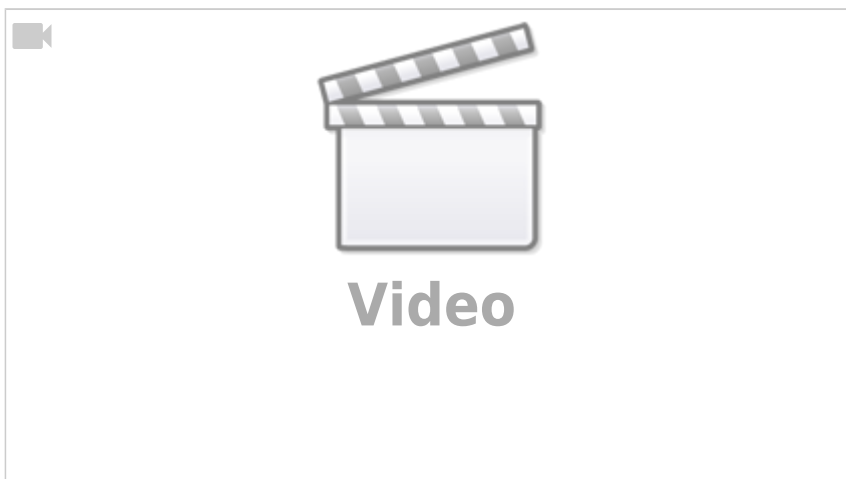
The computer should have the red light ON and the yellow light BLINKING after it has been connected to power (the boot up process should start automatically, with the short BLINKING from the green light inbetween the red and the yellow):



If the SD card is not plugged in and the computer is not booting up, only the RED light will be on, as shown in the image below:



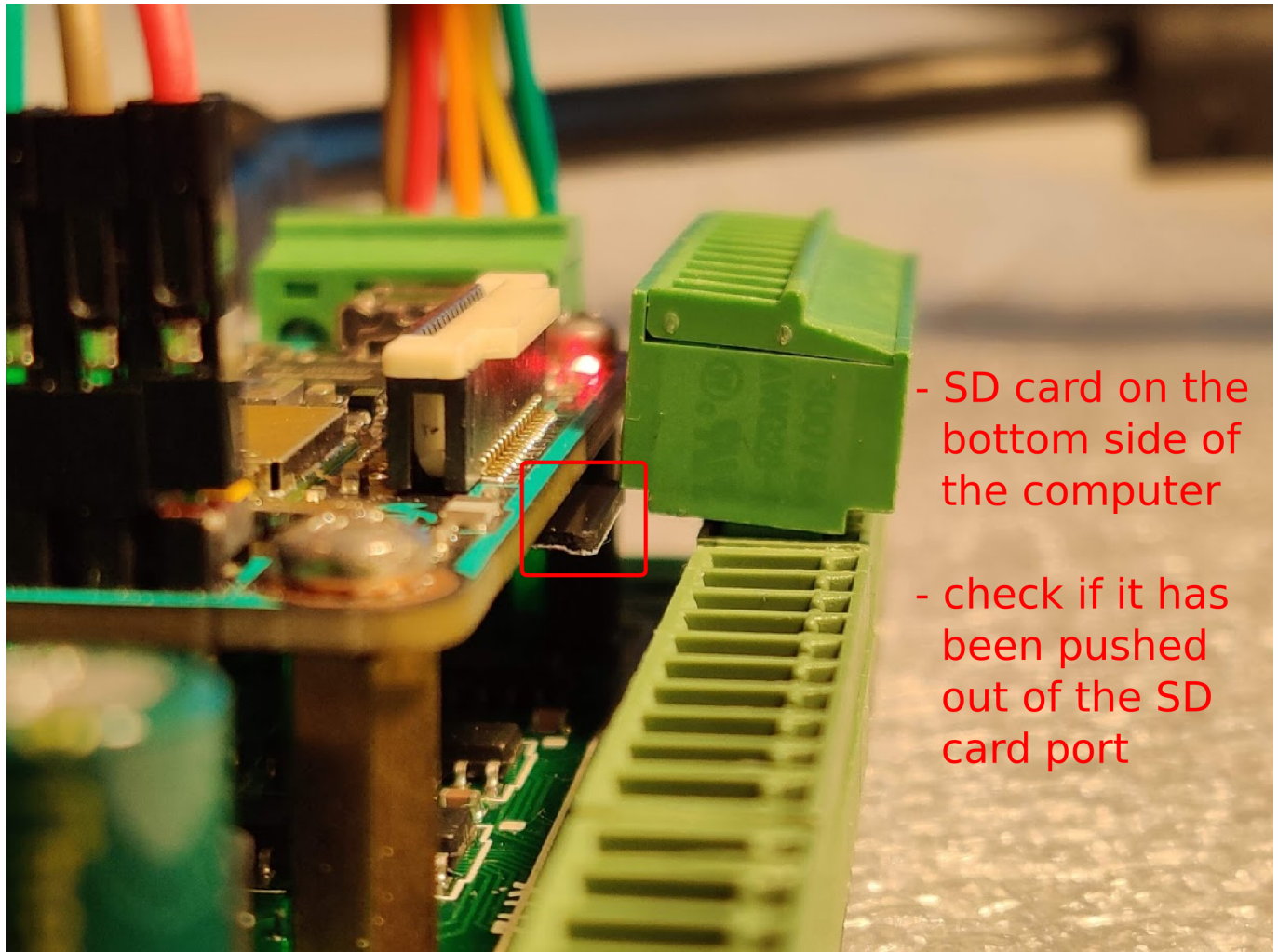
The following video shows the difference between the SD card being plugged in and not:



### Causes of the ASUS Tinkerboard not booting up

On ET6 boards which are using an ASUS Tinkerboard computer, when inputs are plugged into the board, they can interfere with the SD card which is located very close to the plugable connector slots. As show in the image below, the connectors can press on the SD card, causing it to pop out of the SD card slot. This will result in the computer not being able to boot up.





In order to fix this issue, it is recommended to plug in the connectors at a slight angle, monitoring the SD card as the connectors are put into place. This will prevent the SD card from popping out, and the boot up process will proceed as normal.

From:  
<http://cnc42.com/> - myCNC Online Documentation

Permanent link:  
[http://cnc42.com/troubleshooting/hardware\\_checklist/asus\\_tinkerboard](http://cnc42.com/troubleshooting/hardware_checklist/asus_tinkerboard)

Last update: **2019/09/03 11:23**

