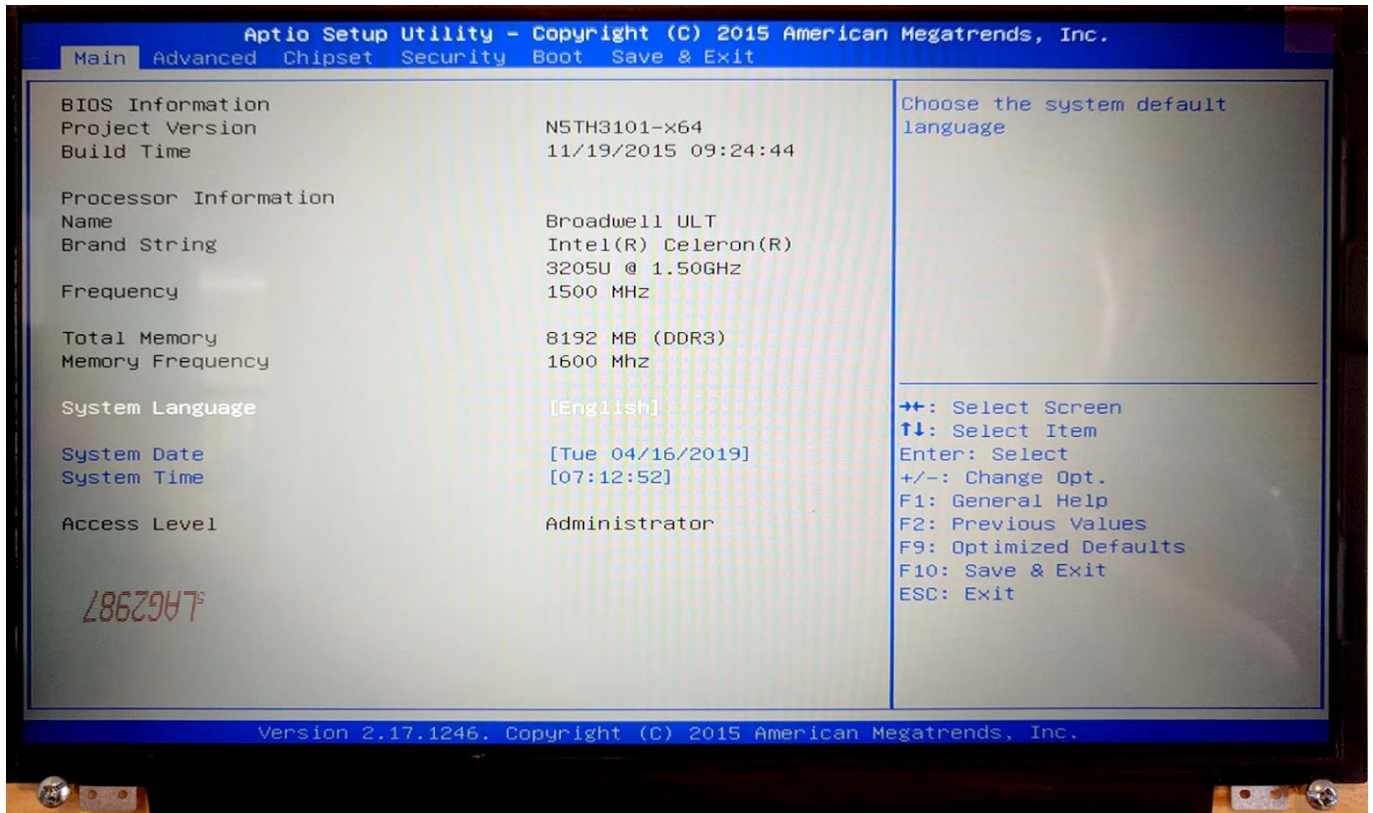
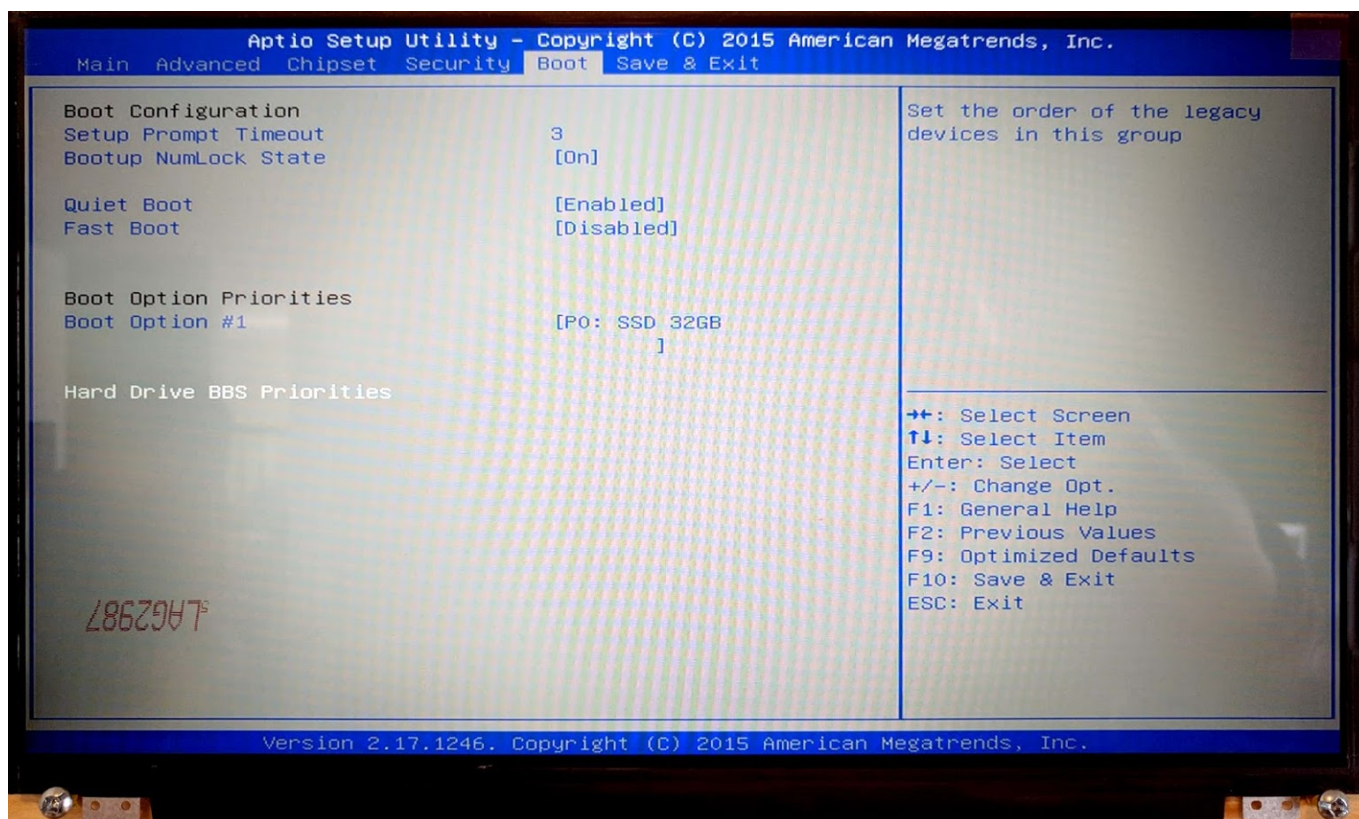


Installing Ubuntu MATE 18.04 through LiveCD with preinstalled myCNC software

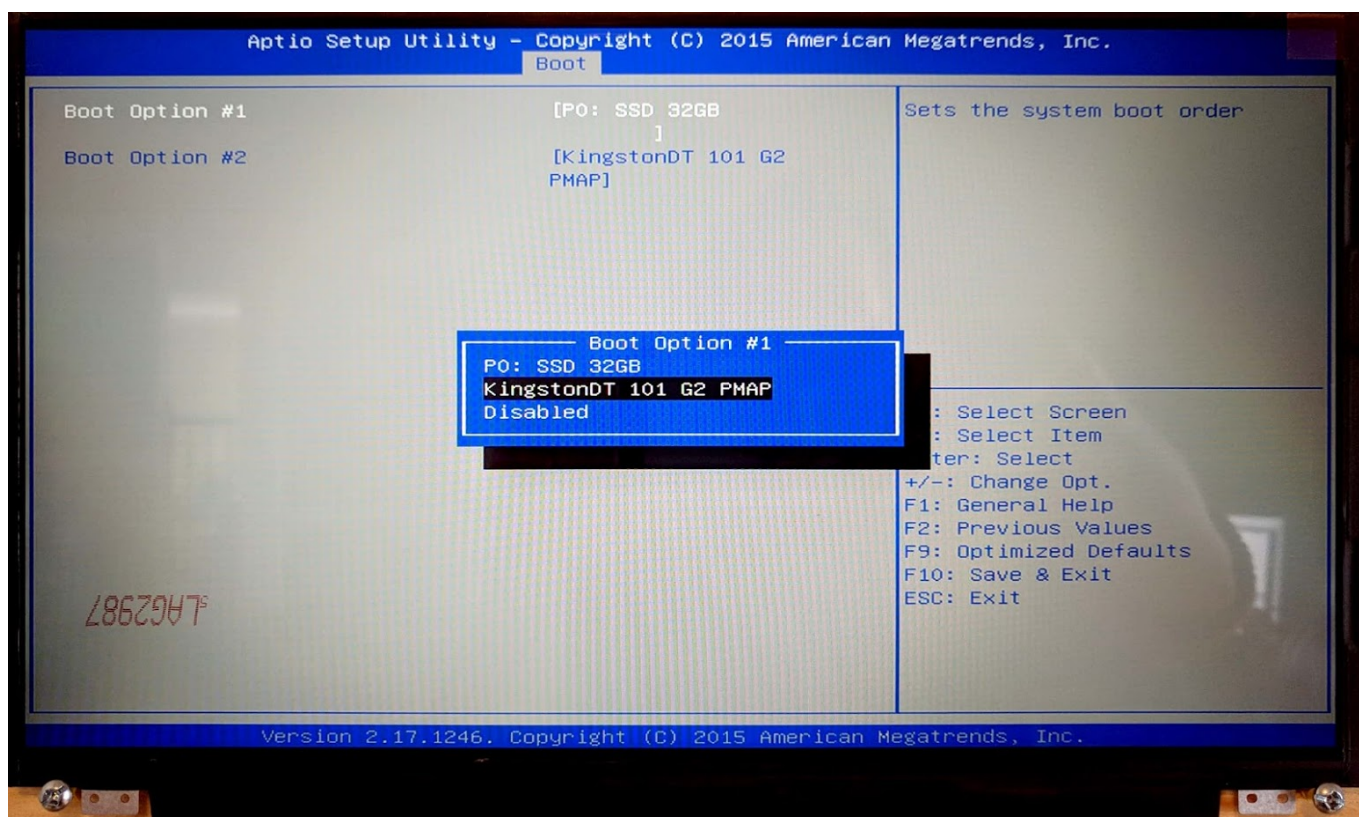
- The LiveCD image can either be burned onto a DVD, or written on a USB disk through the use of [Etcher](#) or [Rufus](#) software. The LiveCD installation packages can be downloaded [here](#).
- Connect the power cable, the screen through an HDMI or VGA cable, keyboard, mouse and the LiveCD with Ubuntu Mate 18.04 to the computer
- When booting up the computer, hold the **Delete** key to enter the BIOS



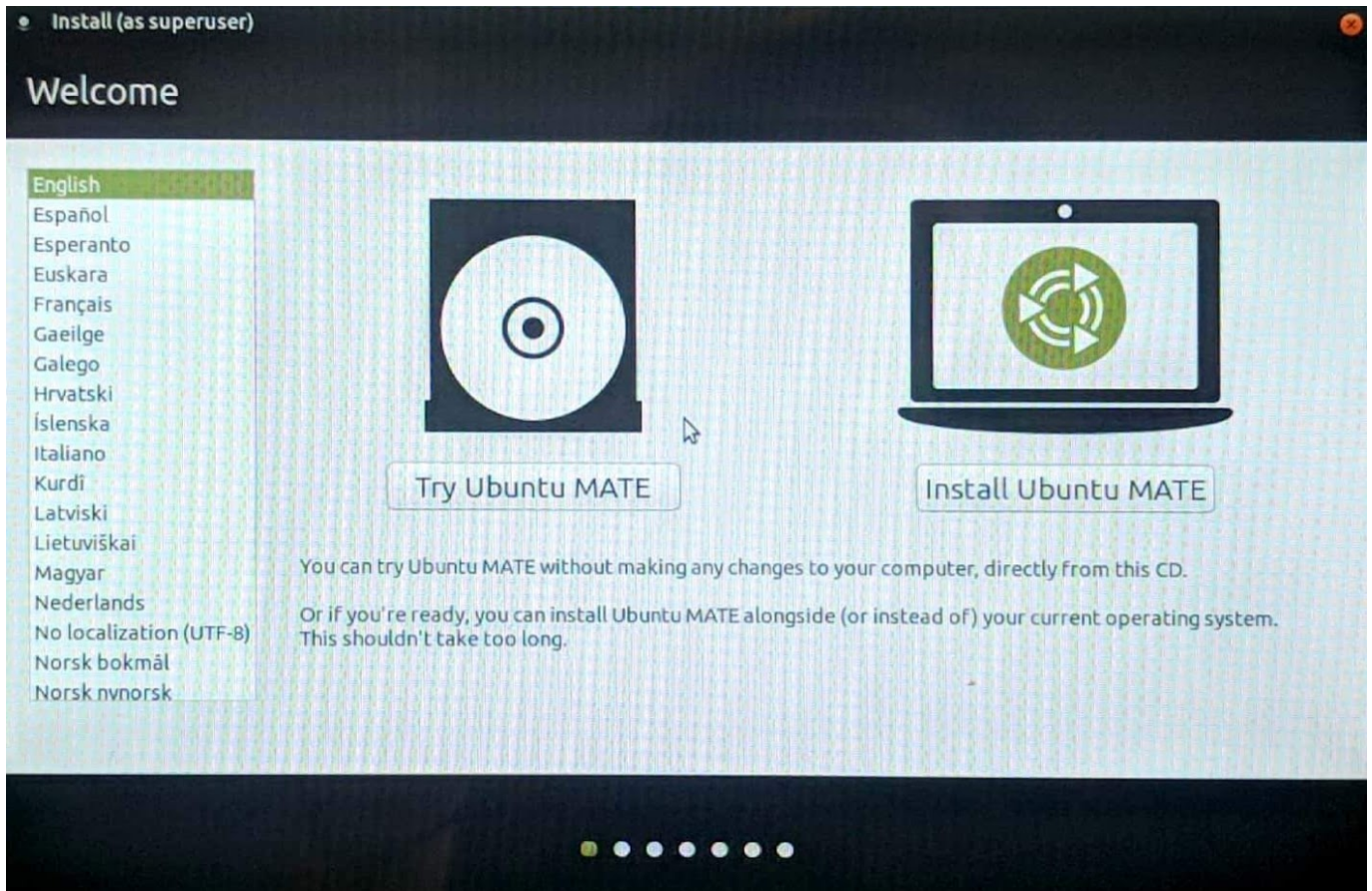
- In the BIOS screen, navigate to the **Boot** tab



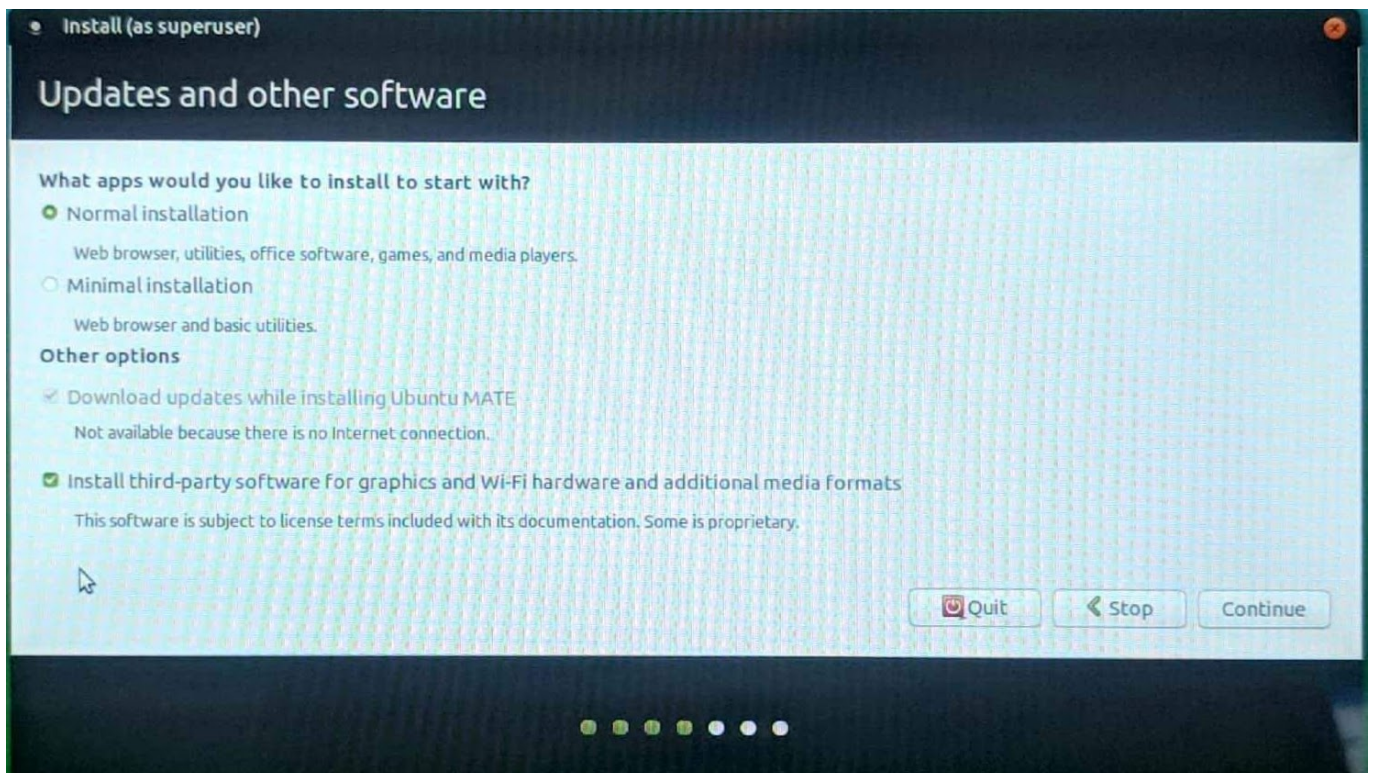
- Select the **Hard Drive BBS Priorities**
- For **Boot Option #1**, switch the SSD 32GB to your LiveCD (in our case, the KingstonDT 101 G2 PMAP)



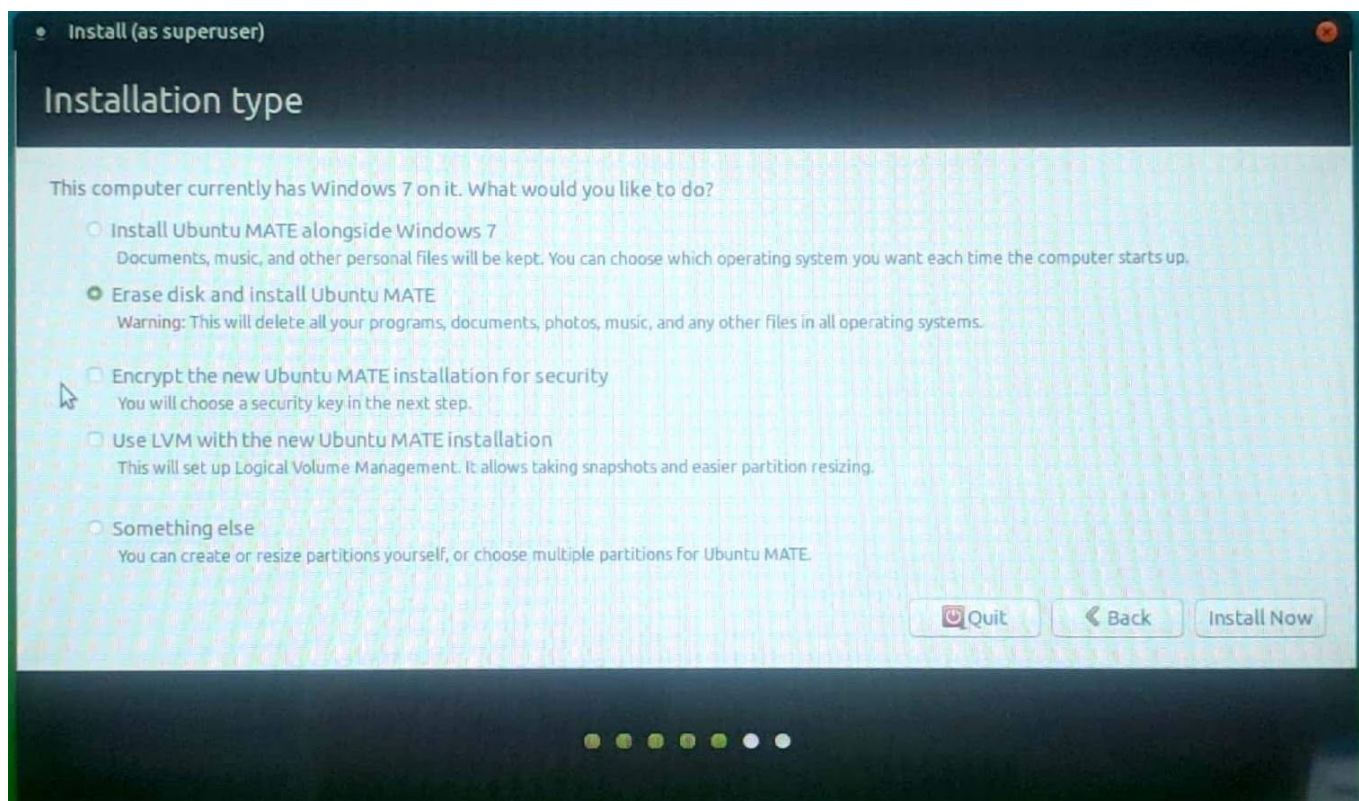
- Save & Exit by pressing F10. The boot-up will begin shortly
- In the popup window, select the **Install Ubuntu MATE** option



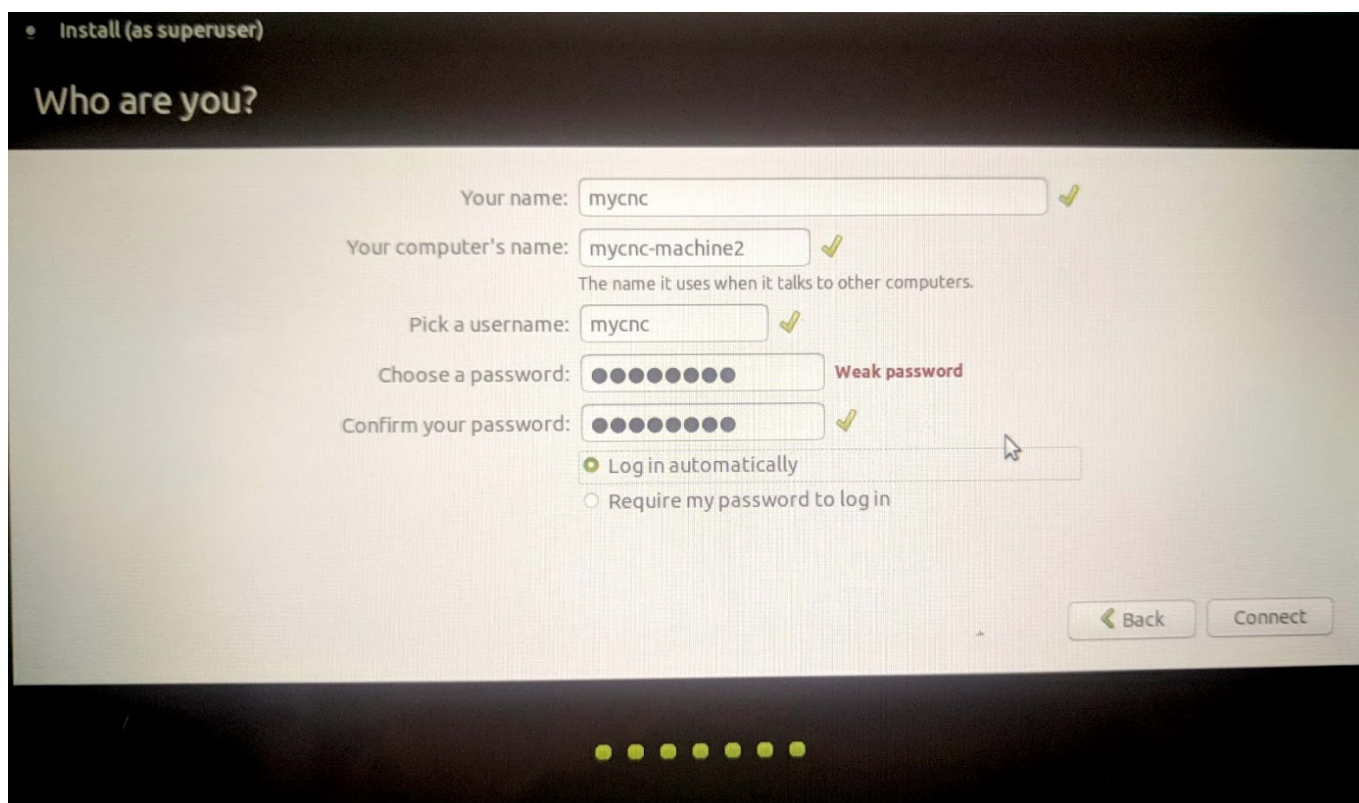
- Select **Normal Installation**, and check the **Install third-party software** checkmark on the next screen



- Select the **Erase disk and install Ubuntu MATE** option if you want to format the Windows partition, leaving only Ubuntu MATE on the computer



- Select your timezone
- In the *Who are you?* screen, use **mycnc** as the username to access the presets that are applied during the installation. These presets include the **mycnc** user in groups such as dialout (access to scanners), sudo (security privileges of superuser), and sambashare (SMB/CIFS networking protocol for Windows). NOTE: These presets are strongly recommended for novice users.
- Select the **Log in automatically** option



The installation of Ubuntu MATE will begin momentarily.

From:

<https://docs.pv-automation.com/> - **myCNC Online Documentation**

Permanent link:

https://docs.pv-automation.com/quickstart/installing_ubuntu_mate

Last update: **2020/03/31 10:30**

