

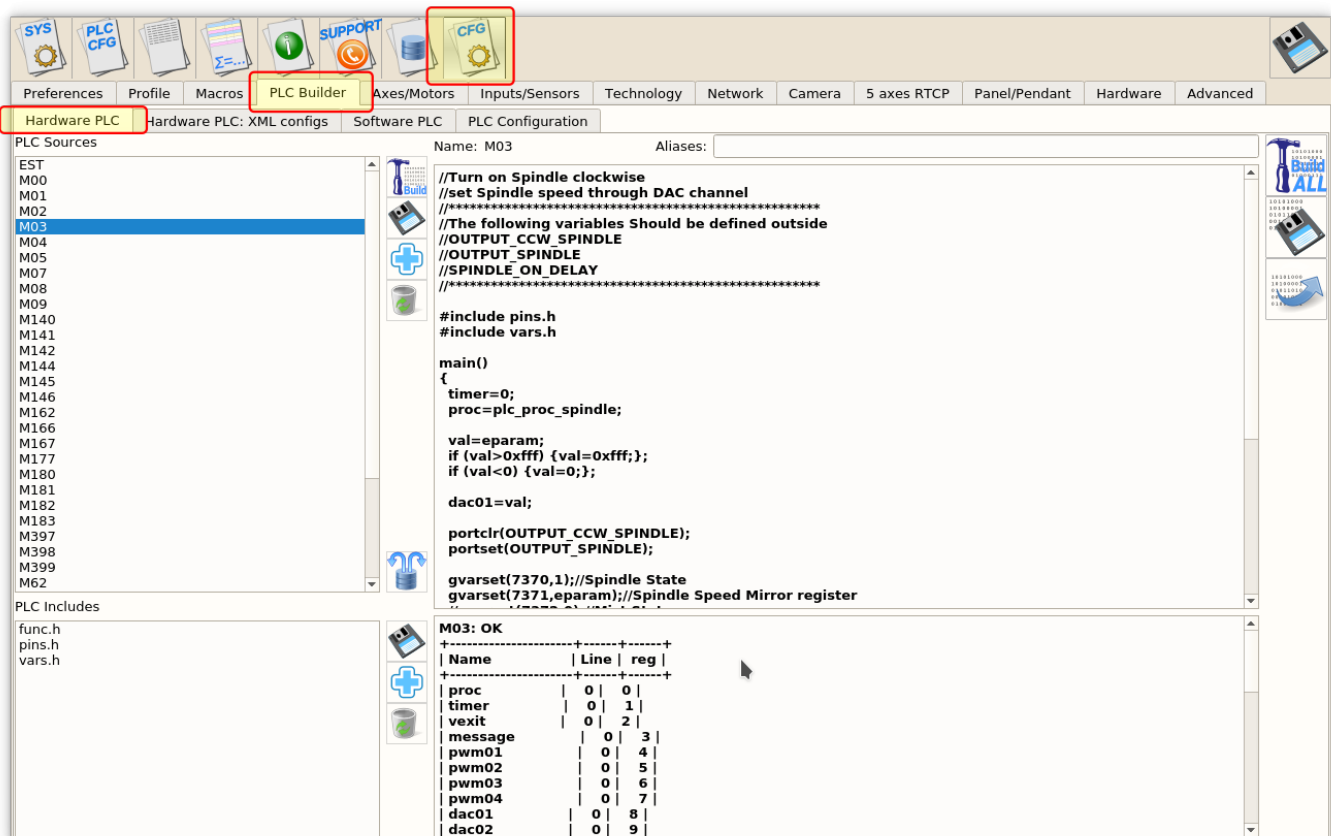
## PLC Builder

PLC controller can load and run small binary programs (PLC procedures). PLC procedure should be written by simplified C-like language, compiled and stored in PLC controller memory to be ready to go.

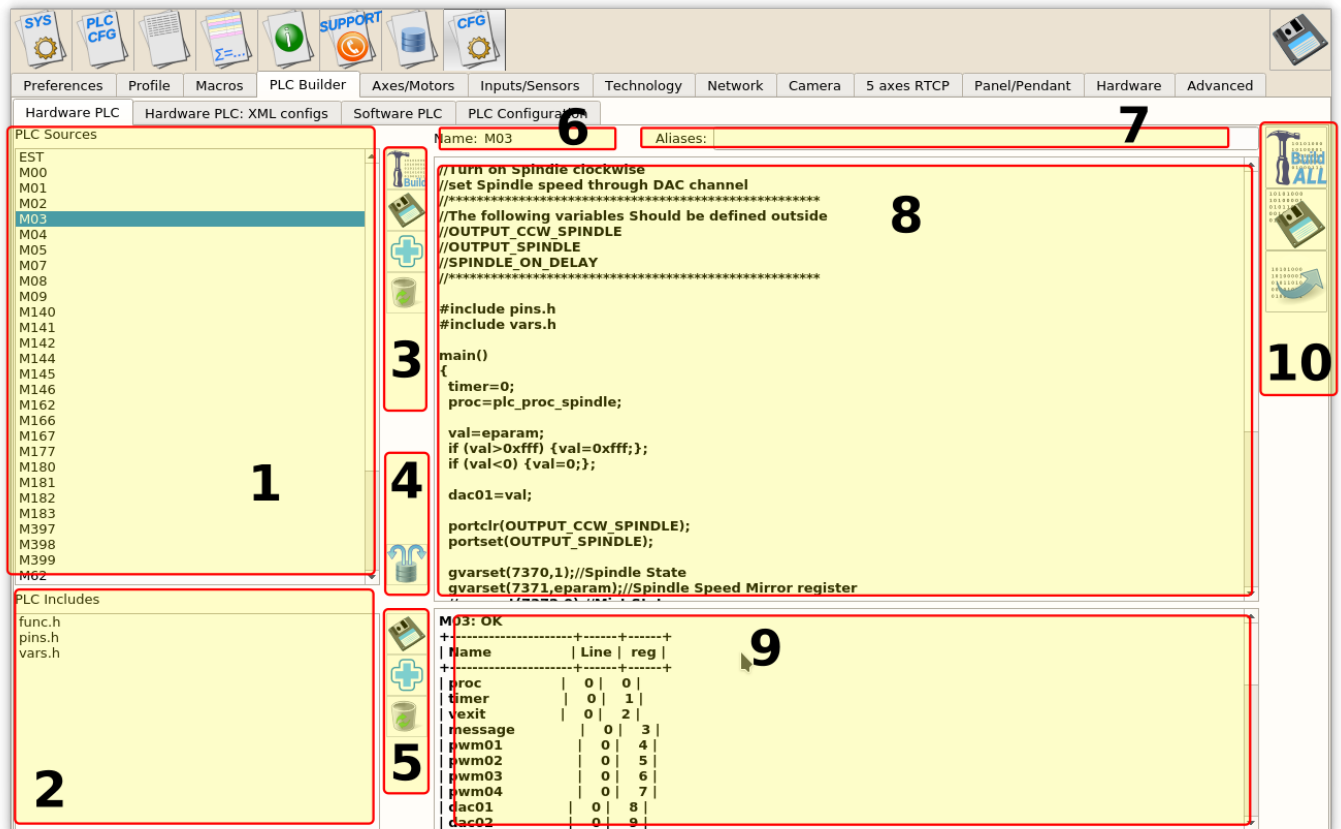
PLC Builder - tiny IDE (Integrated Development Environment) to create and modify PLC procedure source files, compile them to binary code and upload it as RomFS iso image disk to PLC controller memory.

To open **PLC Builder** goto

- Settings **Tab Widget** →
- **Cfg** →
  - **PLC Builder** →
  - Select either **Hardware PLC** or **Software PLC** depends on what PLC you need



### PLC Builder IDE Widget



## PLC Builder Screen Components

1. **PLC Sources** - File List of PLC procedures
2. **PLC Includes** - File List of Include files, that can be used (included) by PLC procedures
3. PLC Source control buttons
  1. Compile Selected Source file, detailed compilation Info will be available in **Compiler output** window
  2. Save - Save Selected Source file on a disk
  3. Add Source - Pressing this button will show Add Source dialog. Enter Procedure name (without extension) and press **OK** to add new PLC procedure Source file
  4. Remove - Pressing this button will remove Selected source file (need to confirm delete in Delete Message Box)
4. Load PLC procedure sources from Templates
5. PLC Includes control buttons
  1. Save - Save Selected Include file on a disk
  2. Add Source - Pressing this button will show Add Include message box. Enter Include name (without extension) and press **OK** to add new PLC procedure Source file
  3. Remove - Pressing this button will remove Selected include file (need to confirm delete in Delete Message Box)
6. Name - Display of Current PLC Source
7. Aliases - List of [Aliases](#) for Current PLC source
8. Current PLC/Include source text
9. PLC Compiler messages
10. Build Buttons:
  1. **Build All**
  2. **Save All**
  3. **Send**

## PLC Procedure Aliases

## PLC Predefined Procedures

From:

<https://docs.pv-automation.com/> - **myCNC Online Documentation**

Permanent link:

[https://docs.pv-automation.com/plc/plc\\_builder](https://docs.pv-automation.com/plc/plc_builder)

Last update: **2017/09/12 21:26**

