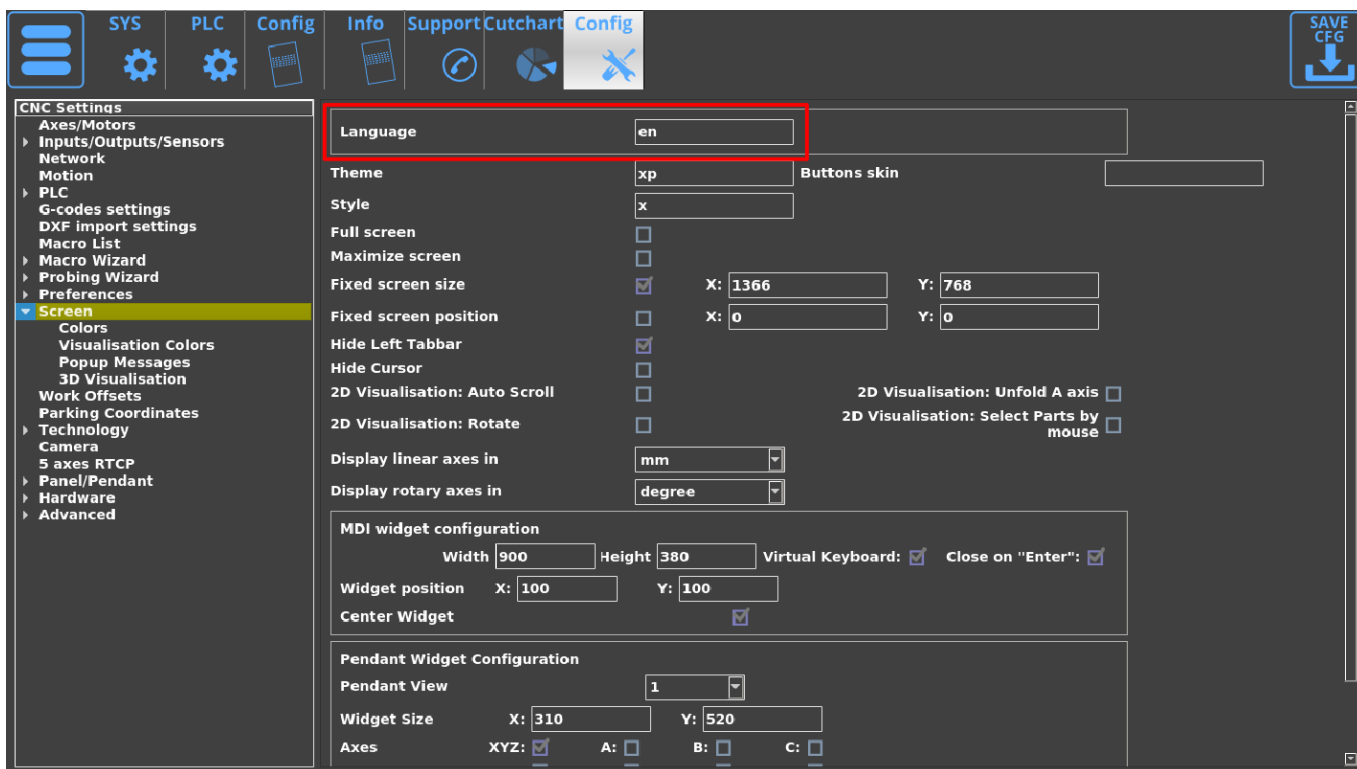


Language Localization

A number of language localization packages, some of them full while others partial, are already included in the myCNC software. In order to switch the application language, head into Settings > Config > Screen, and type a two-digit language code into the language field, press Save CFG and reload the application for the change to take effect:



Code	Language
en	English
ru	Russian
es	Spanish
pl	Polish
kr	Korean

While some language localization can be performed by editing the selected myCNC profile (a lot of the on-screen elements, tooltips and labels can be translated this way), editing the Settings window, along with some others, is not possible for the end-user by simply editing the necessary files in the profile folder.

If a localization package is missing, and you would like to help the myCNC team add it to the application, you can head over to our [Downloads page](#), scroll down to the Language Translation Files section and download either the Excel or the LibreOffice file.

Anydesk software ready

Post Processors

2019-06-10	SheetCam (Mill)
2019-06-10	SheetCam (Plasma)
2019-08-29	Fusion360 (3 axis mill)

Language Translation Files

Excel
LibreOffice

Plasma Cutting Cutcharts

Plasma Power Source	Cutcharts file	Cutcharts CSV table
MAXPRO200	MAXPRO200 Cutcharts	MAXPRO200 CSV
Powermax125	Powermax125 Cutcharts	Powermax125 CSV
Kjellberg Cutfire 100i	Kjellberg Cutfire 100i Cutcharts	Kjellberg Cutfire 100i CSV

This file will contain a number of entries which can be translated from English into your language of choice:

File Edit View Insert Format Styles Sheet Data Tools Window Help

Liberation Sans 10

Aliases

A	B	C	D	E	F	G	H
1 ORIGINAL LANGUAGE (ENGLISH). DO NOT EDIT THIS COLUMN!!!!	PUT TRANSLATION TO THIS COLUMN						
2 1 edge, Constant amount							
3 1 edge, Constant depth							
4 1-Pass Cutting/Engraving							
5 2D cutting							
6 2D/Highlight:							
7 /("Div)							
8 2D Visualisation: Auto Scroll							
9 2D Visualisation: Rotate							
10 2D Visualisation: Select Parts by mouse							
11 2D Visualisation: Unfold A axis							
12 2 edges, Constant amount							
13 2 edges, Constant depth							
14 2 lines G76							
15 3D Printer							
16 3D Visualisation							
17 5 axes RTP							
18 7.Machine Homing							
19 8.Assign tool number							
20 A1 - rotation around X							
21 A2 - tilt around X							
22 A' - rotation/tilt around X							
23 absolute							
24 Acceleration							
25 Acceleration Ratio (20 by default)							
26 Acceleration XY, %accel%							
27 Accept Command Buffer Lags							
28 Accept jog while Job is running							
29 Accept single G-code							
30 Action							
31 Actual							
32 Actual Current, Amps							
33 ADC 0							
34 ADC0							
35 ADC0:							
36 ADC 1							
37 ADC1							
38 ADC1:							
39 ADC 2							
40 ADC2							
41 ADC2:							
42 ADC 3							
43 ADC3							
44 ADC3:							
45 ADC 4							
46 ADC4							

Sheet 1 of 1

xx.translation

Default

Russian

Average: Sum: 0

100%

After translating the necessary sections of the spreadsheet, you can send the updated file back to us, using the information listed on our [Contact Us page](#). Note that it is not necessary to translate the entire file - we can always update the additional sections that need changing at a later date.

From:
<http://cnc42.com/> - myCNC Online Documentation

Permanent link:
<http://cnc42.com/other/language-localization>

Last update: 2024/10/31 11:34

