

# myCNC-ET9 (ET7-R4 and above)

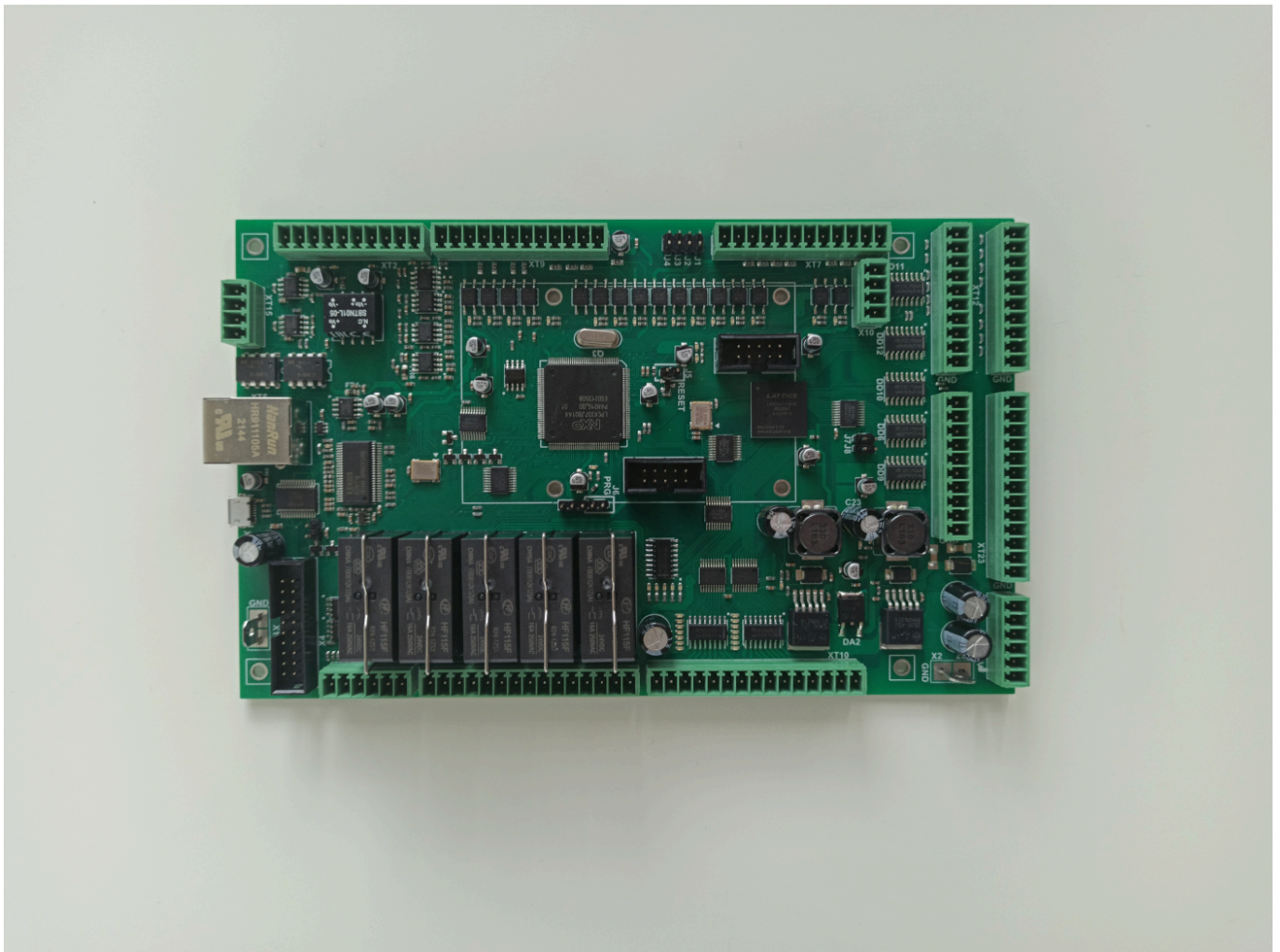
The myCNC-ET7R4 (also called the myCNC-ET9) controller is the updated version of the myCNC-ET7 board with some additional functionality. For information on the ET7, please consult the following manual: [myCNC-ET7 CNC controller](#)

The board naming is different due to a different chip, which requires a separate version of the firmware from the regular ET7 boards (such as ET7R3).

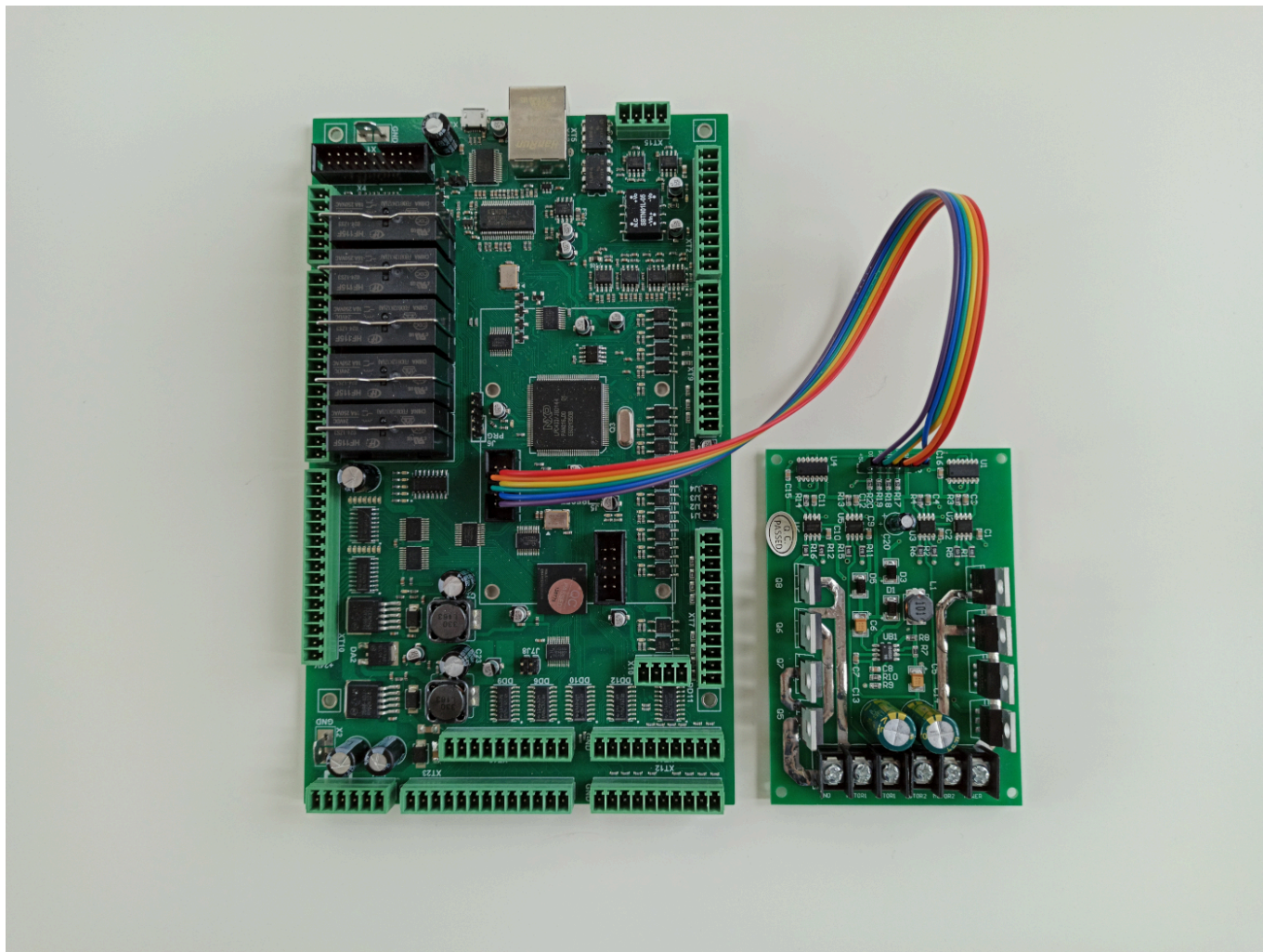
*NOTE: The ET7R5 (Revision 5) and the ET7R6 (Revision 6) controllers use the same ET9 firmware as ET7R4. The functionality between R4 and R5/R6 versions of the board remains the same.*

---

The ET7R4 controller is pictured below:



The myCNC-ET9 pictured with a DC motor driver:



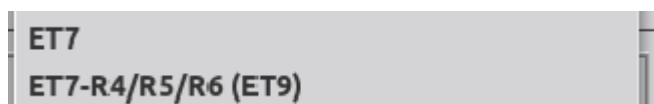
myCNC-ET9 main features in addition to the functionality present on the previous iterations of the board:

- Motor driver can be plugged into an auxiliary connector (outputs #17/#18)
- 2 PWM ports duplicated (PWM1, PWM2)
- Since the driver board is designed for 2 motors, therefore the ET9 has support for both

## Reflashing the ET9 board

### Reflashing the ET9 board

To reflash the ET9 board, follow the instructions on reflashing the ET7 boards [here](#), however make sure to select the **ET7-R4/R5/R6 (ET9)** option in the Select Board field.



Failure to select the correct revision version of the board will result in your board being non-operational. Please consult the myCNC support team prior to a reflash should you have any questions.

From:

<http://docs.pv-automation.com/> - **myCNC Online Documentation**

Permanent link:

[http://docs.pv-automation.com/mycnc/mycnc\\_et9](http://docs.pv-automation.com/mycnc/mycnc_et9)

Last update: **2023/03/27 13:41**

