

myCNC-ET10 CNC controller (Revision 3)

This page is for the latest revision of the myCNC-ET10 control board (revision 3). To find out more about revision 2, please consult the [myCNC-ET10-R2 manual](#).

Note: The ET12 board is the new updated version of the ET10 controller, which requires unique firmware due to the use of a different chip.

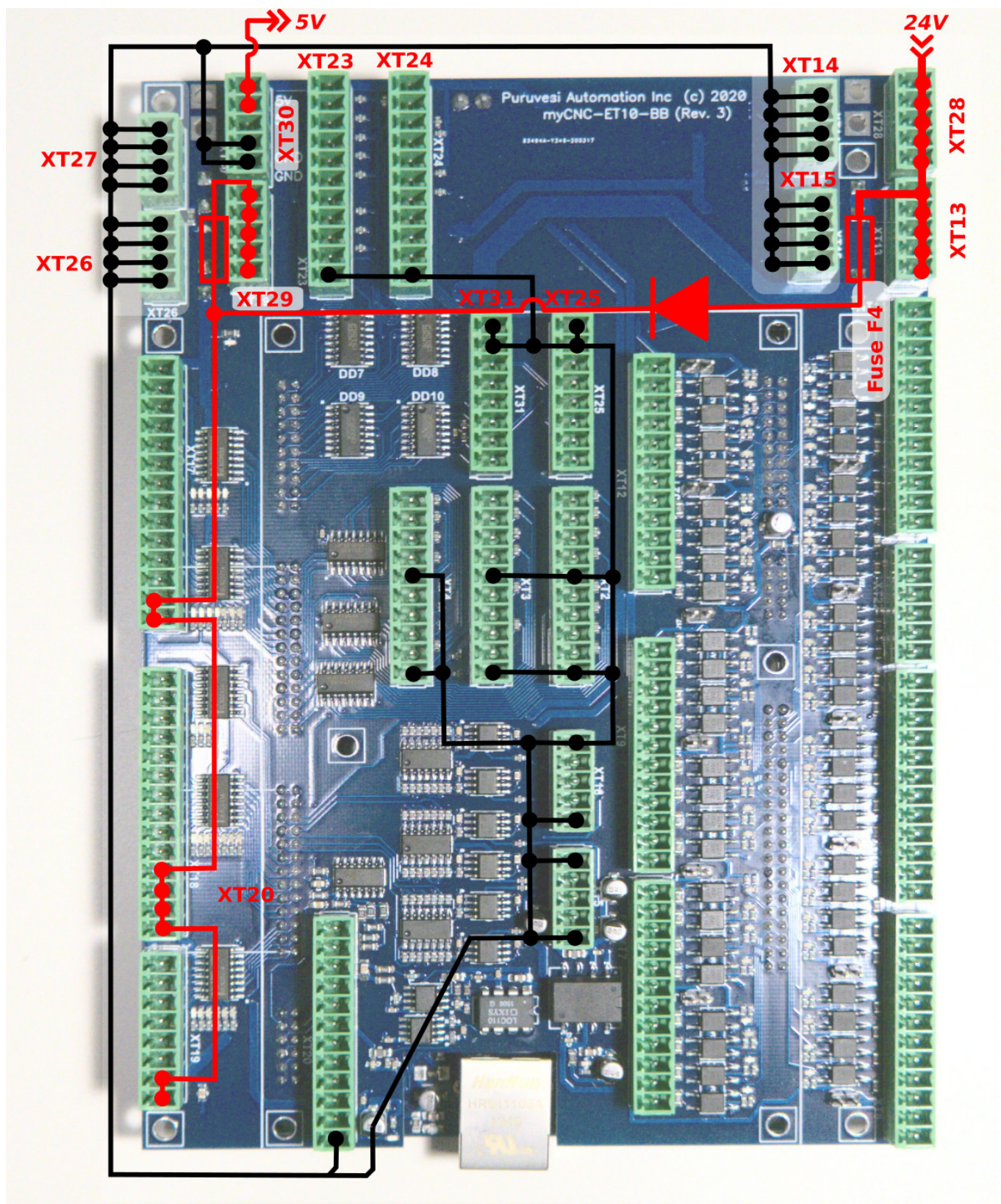
The new revision of the breakout board is now compatible with both the ET10 and the ET15 (as an option instead of the native ET15 breakout board). Galvanic isolation on the ADC has been added (highly useful for plasma cutting applications).

ET10R3C controller specifications:

- 6 channels pulse/dir high speed differential outputs compatible with RS422 (TIA/EIA-422) standard;
- 6 channels +/-10V DAC outputs for analogue servo-driver control;
- 6 channels incremental encoders inputs, 4 full ABC encoder inputs, 2 reduced AB encoder inputs;
- 48 binary inputs (if use with ET10BB breakout - all inputs have galvanic isolation, 12 groups of 4 binary inputs, compatible with NPN & PNP sensors);
- 24 binary outputs (if use with ET10BB breakout - all outputs are open collector, 24V 0.25A);
- 4 PWM outputs (if use with ET10BB breakout - all PWM outputs are open collector, 24V 0.25A);
- 8 ADC inputs (if use with ET10BB breakout - 6 conventional ADC inputs, 1 ADC is differential input 30V, 1 ADC is differential with galvanic isolation for the 0-5V range);

Power supply connection

24VDC is used to supply myCNC-ET10 control board. The board contains 4 pins for connection +24V (joined internally) and a number of GND pins for convenient connection of external devices. The 24V DC Power Supply and +24V and GND pins are shown in the picture below.

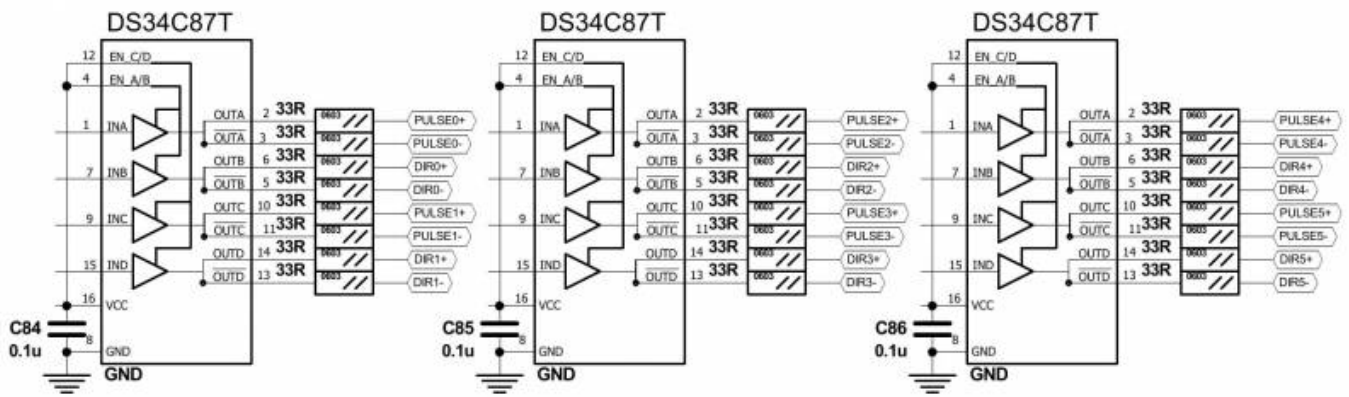


Pulse-Dir outputs

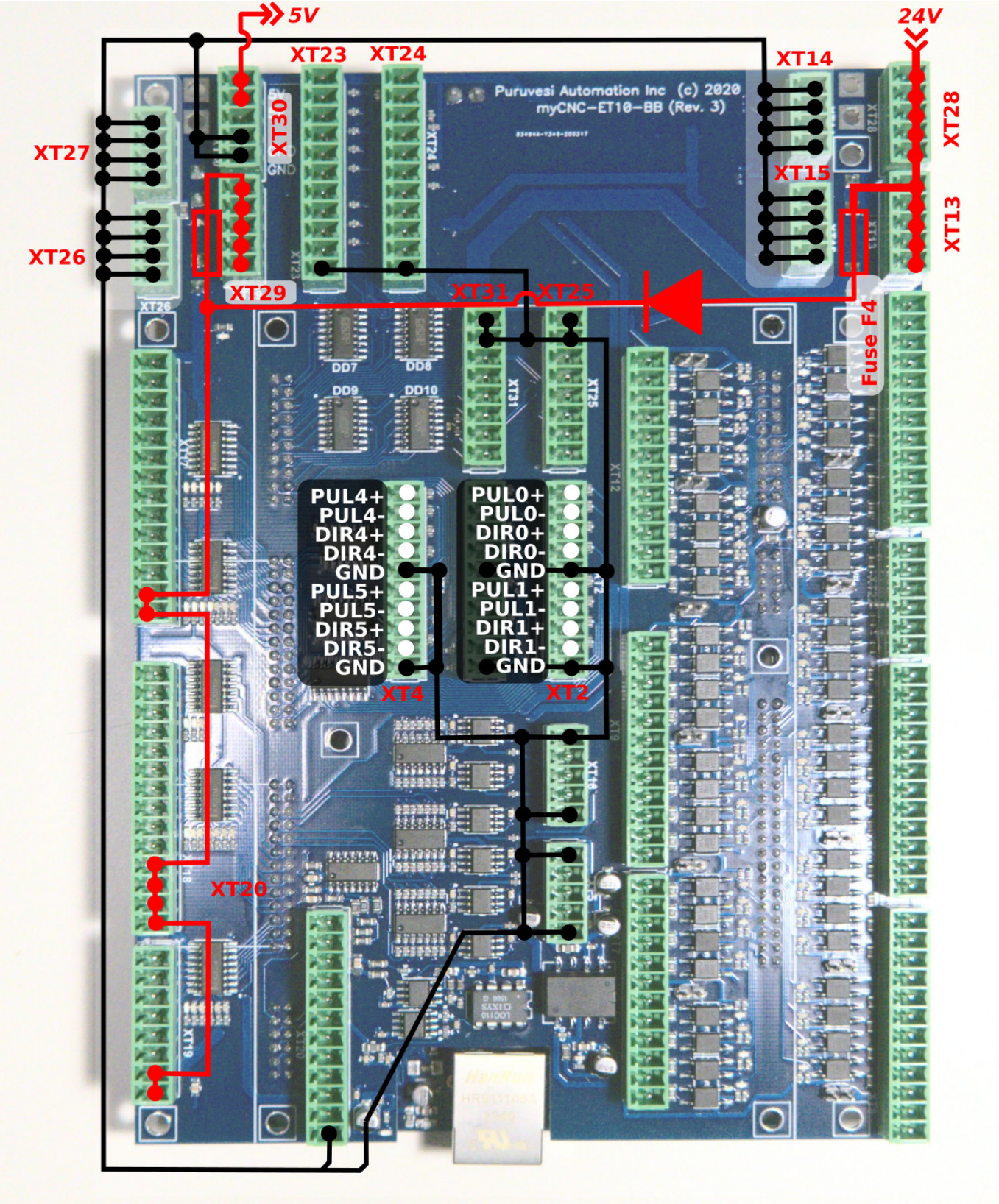
ET10 has 6 channel pulse/dir high speed differential outputs compatible with RS422 (TIA/EIA-422) standard, with the maximum pulse frequency of 3MHz.

ET10 pulse/dir outputs conform to the RS485 standard and are compatible with most of servo and stepper drivers (line driver with paraphase signals positive and negative polarity). Internal schematic

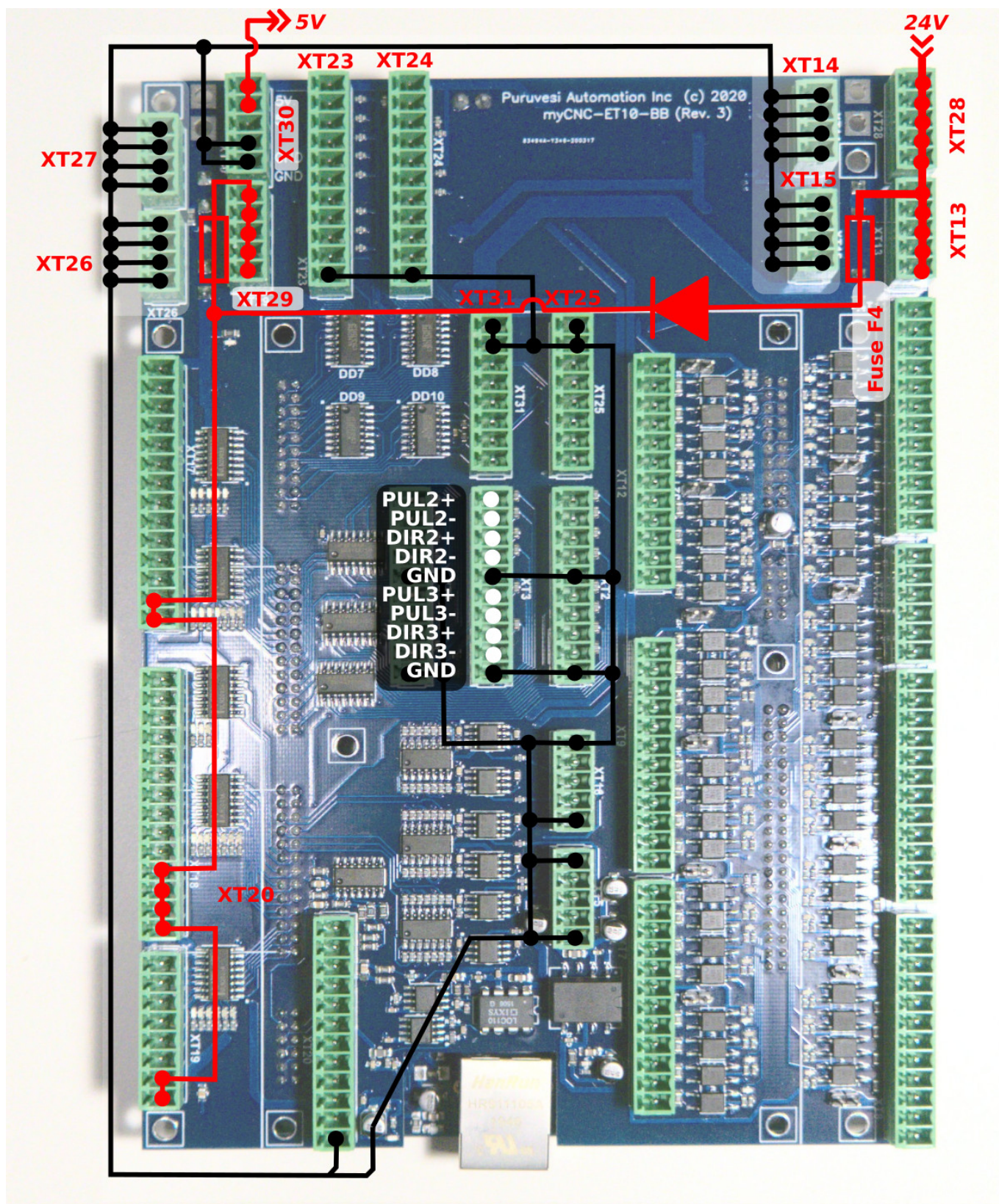
for pulse-dir is shown in the picture below:



PULSE-DIR channels 0,1,4,5 pinout



PULSE-DIR channels 2,3 pinout

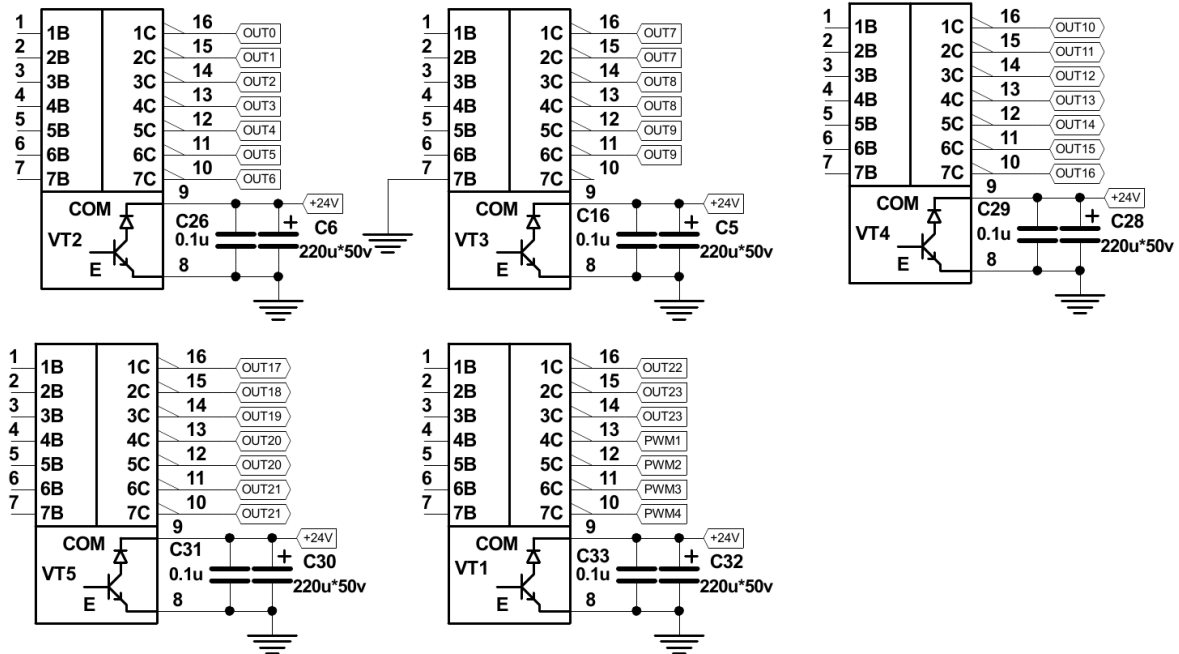


ET10 Output pins

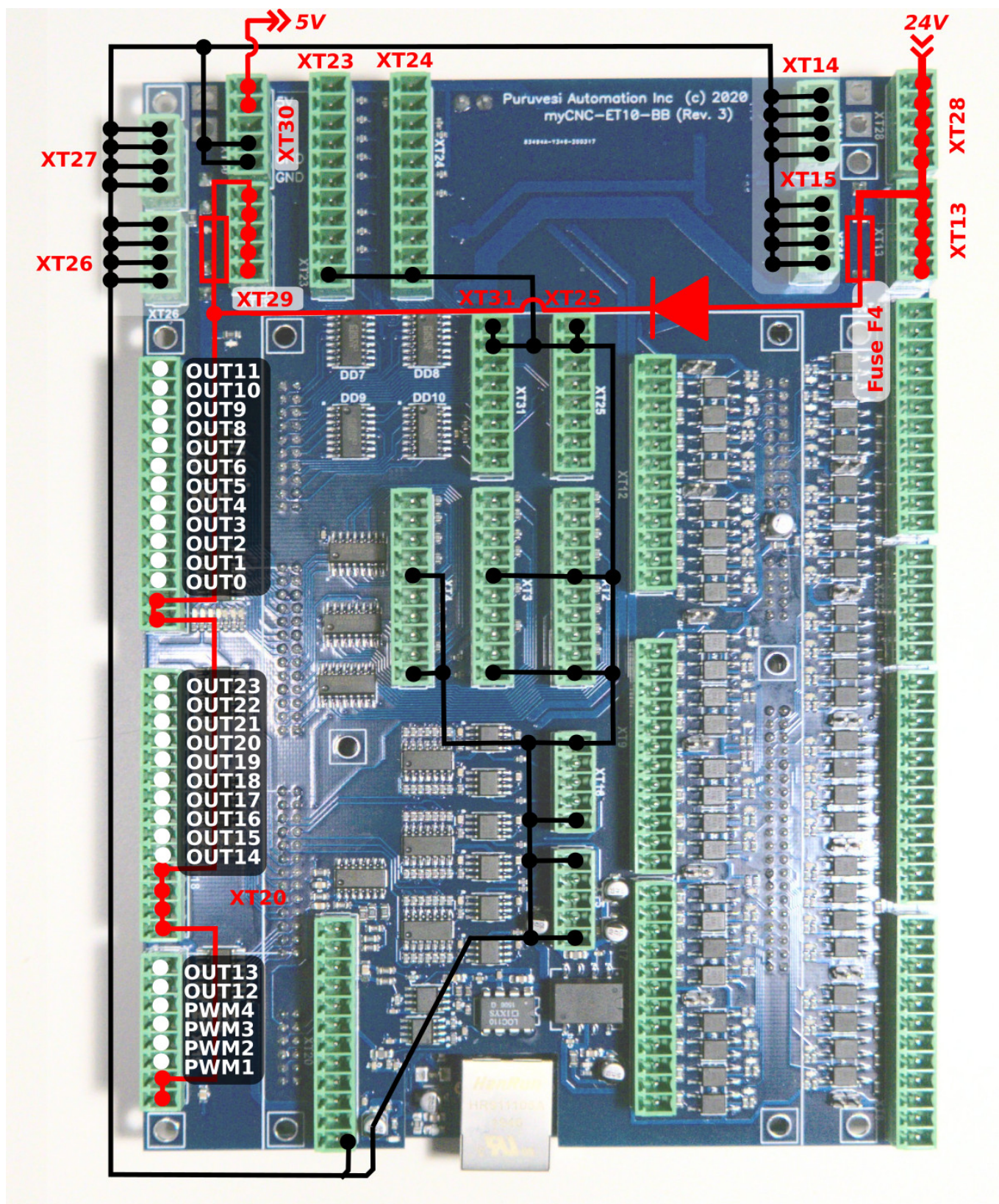
ET10 board contains 28 output pins-

- 24 open collector outputs (OUT#0 ... OUT#23)
- 4 PWM outputs (PWM#1, PWM#2, PWM#3, PWM#4)

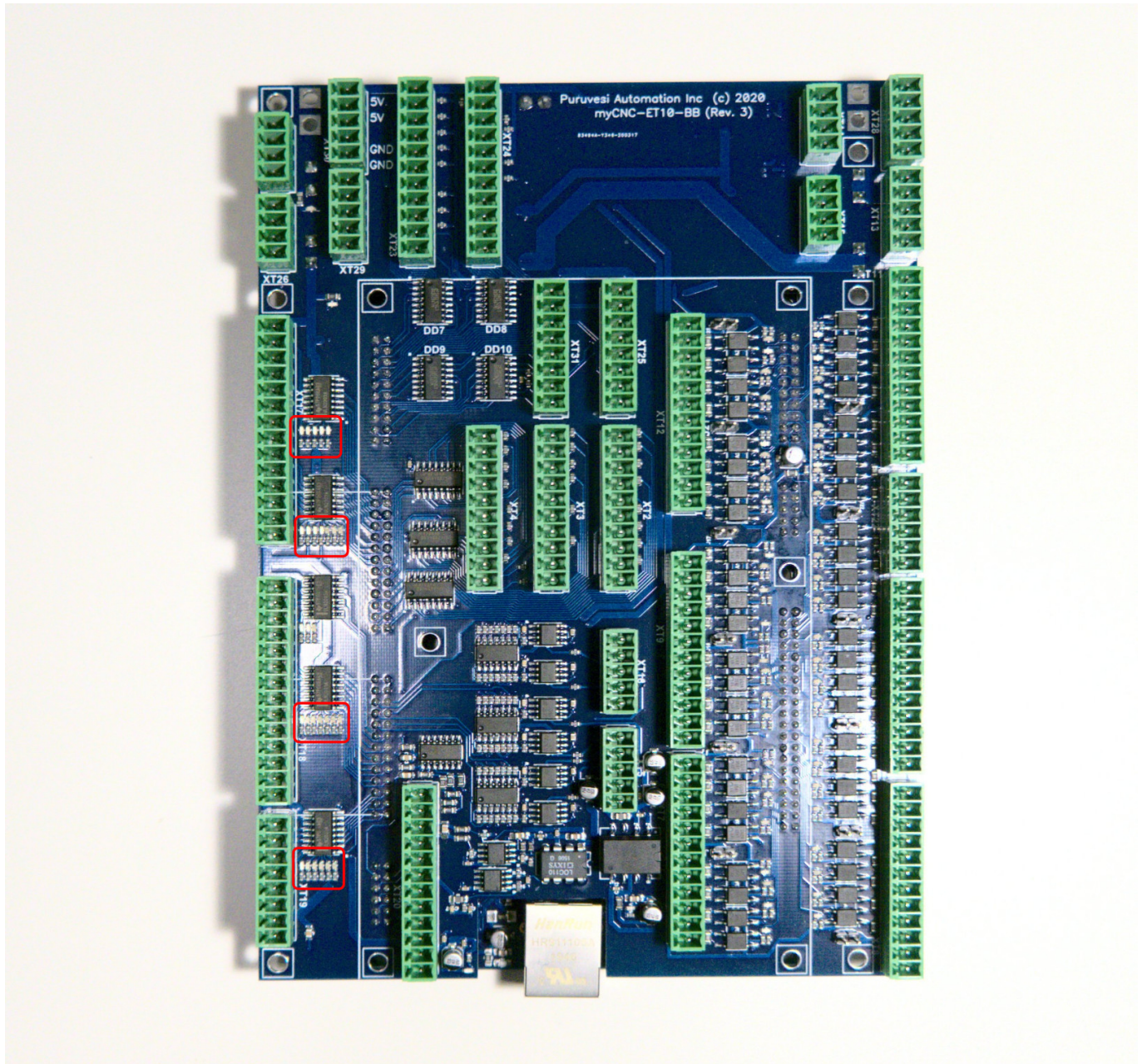
An internal schematic is shown in the picture below. Darlington transistor array chips ULN2003 are used to buffer binary outputs in ET10. Each chip contains 7 transistors and handles up to 7 binary outputs. We recommend not to exceed 0.25A output current for each output pin (however ULN2003 maximum current is 0.5A according to the datasheet).



ET10 pinout for the outputs is shown below:

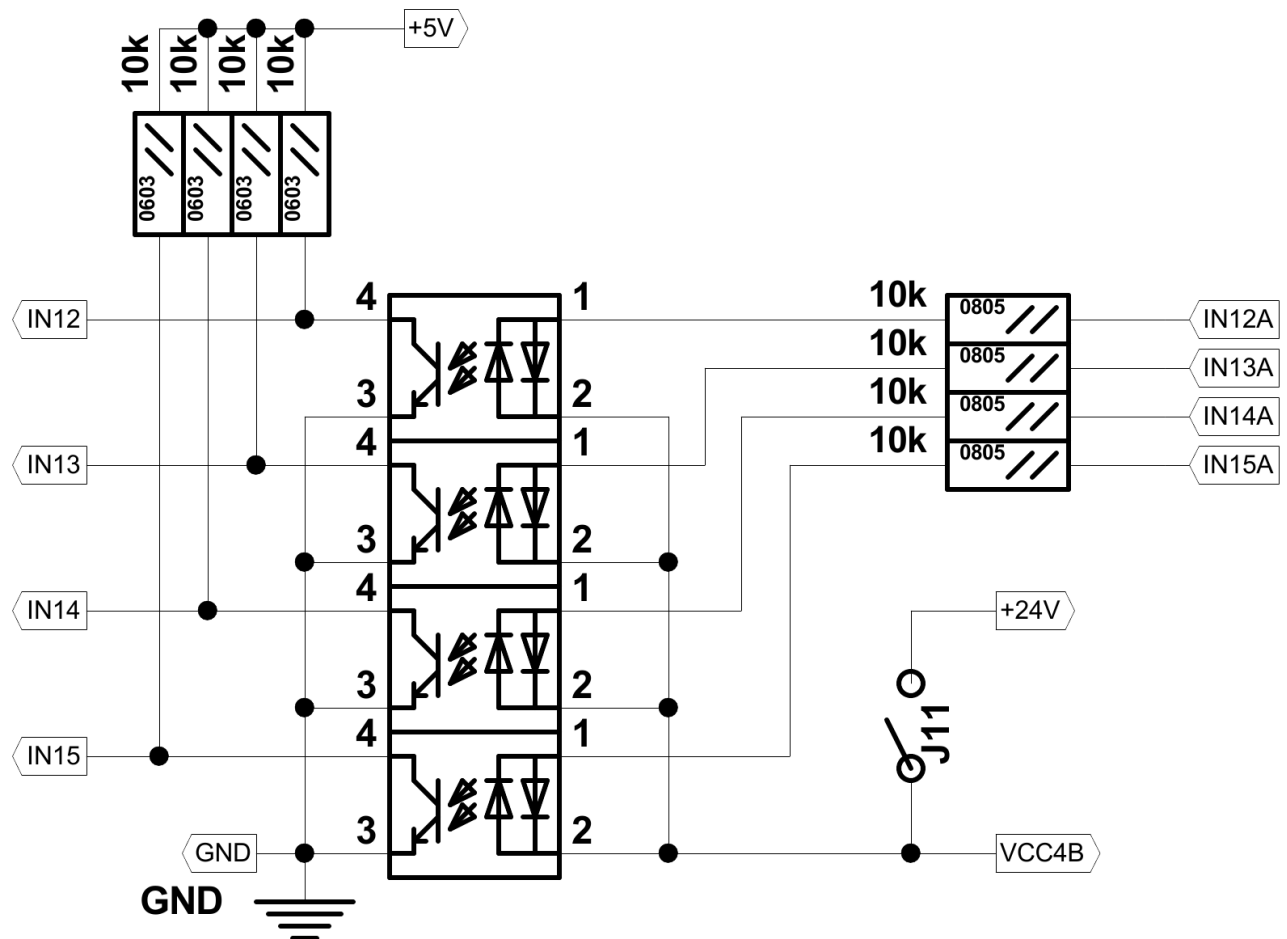


There are LED indicators for each Output and PWM pin on the ET10 board to control actual Output/PWM state. LEDs are highlighted in the picture below.

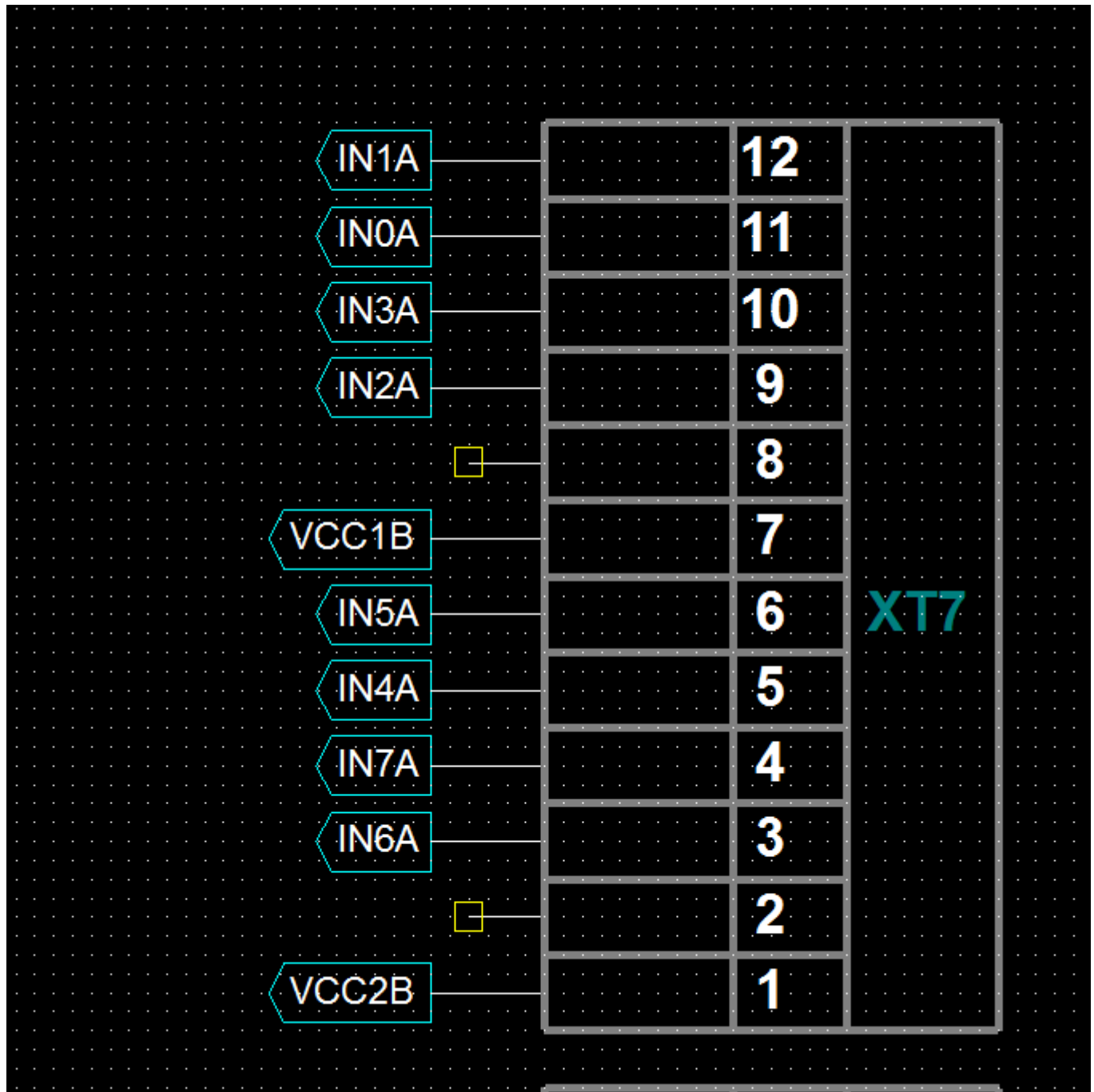


Galvanic isolated inputs

The ET10 control board has 48 galvanic isolated binary inputs, 12 groups of 4 inputs each. Each group has a common LED wire and separate power supply pins so inputs can be powered from different power sources. Using PNP and NPN sensors simultaneously is possible too. Schematic of the 4 inputs group is shown in the picture below.



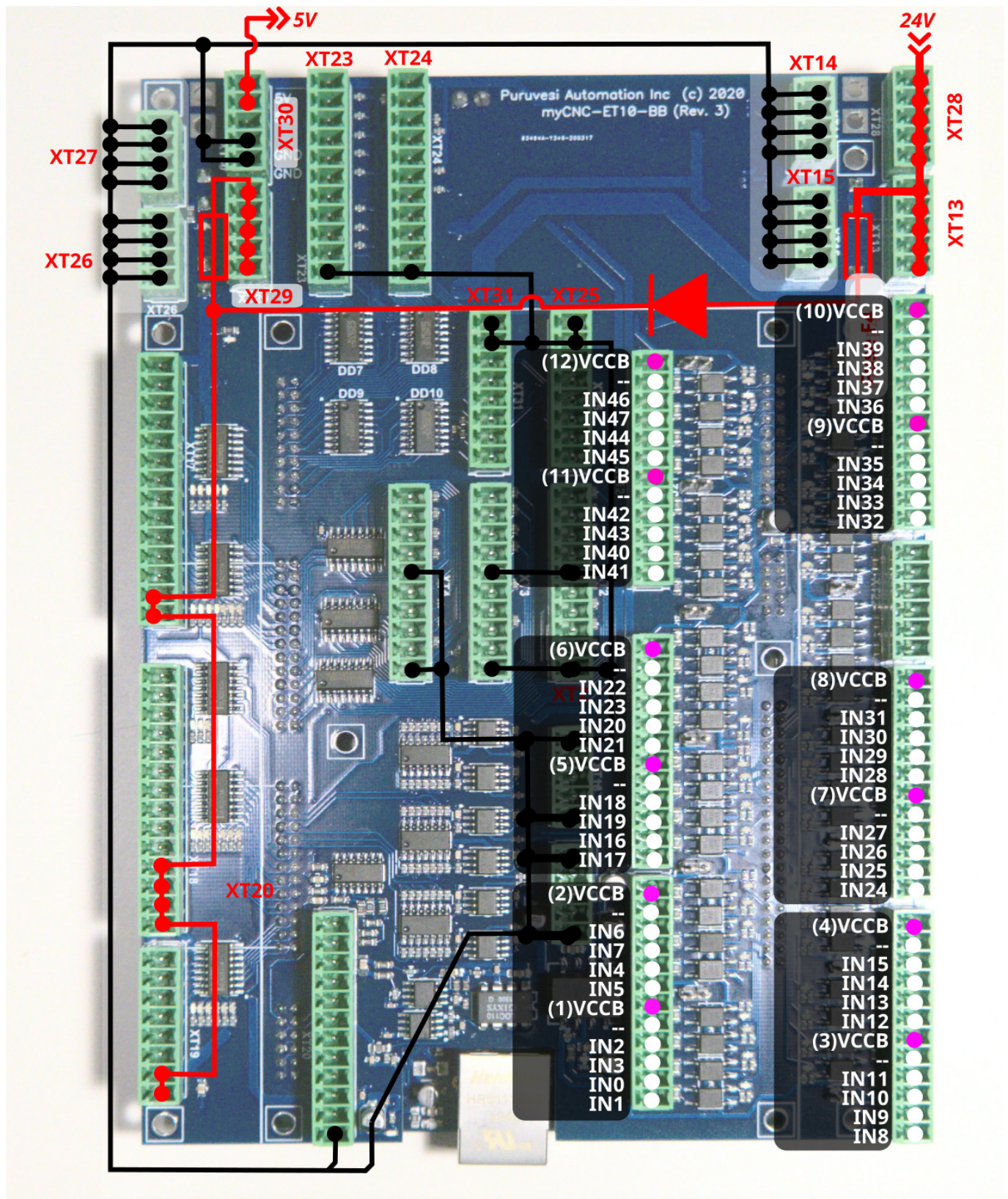
The VCCB (common wire) is used for external power supply connection. Unlike the ET10R2 controller, the ET10R3 does not have an active VCCA port:



Beside external power supply, internal +24V DC can be used to supply input LEDs, if the correspondent jumpers are closed.

WARNING: If an external Power supply is used, correspondence jumpers for the group should be OPEN

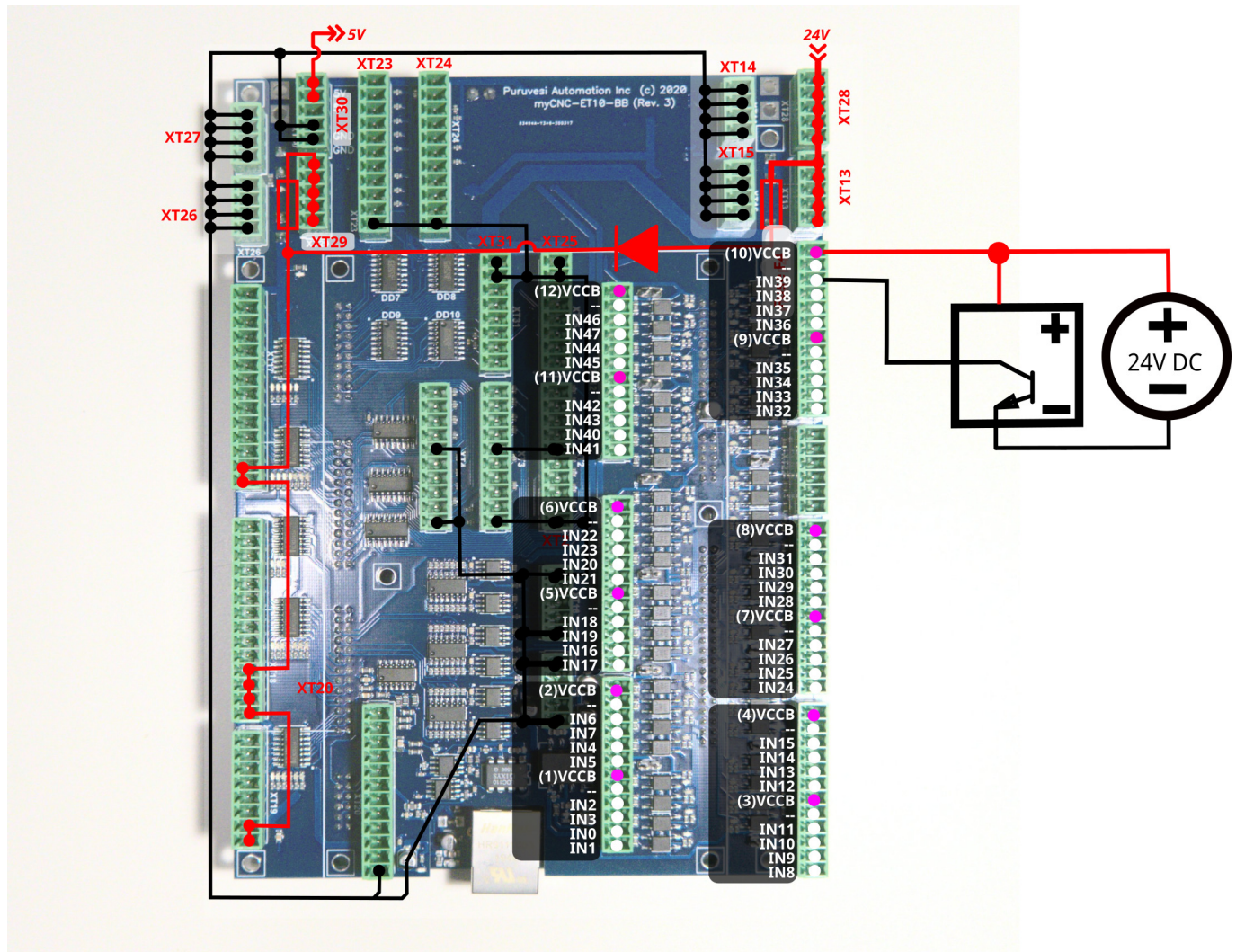
Jumpers to use the internal power supply for each 4-inputs group are shown in the picture below



Connection Examples

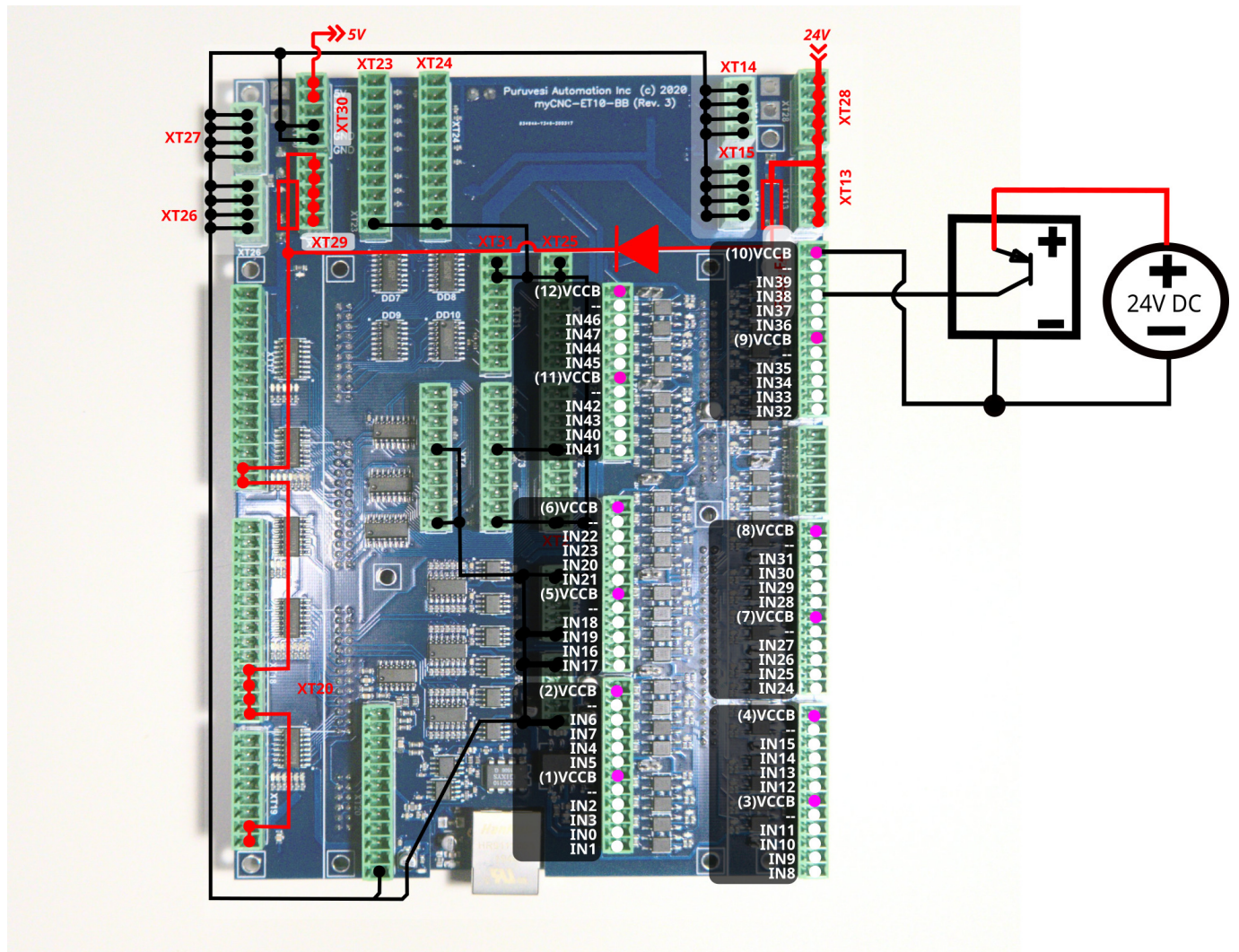
3-wire NPN sensor connection example

External power supply. Jumpers are open.



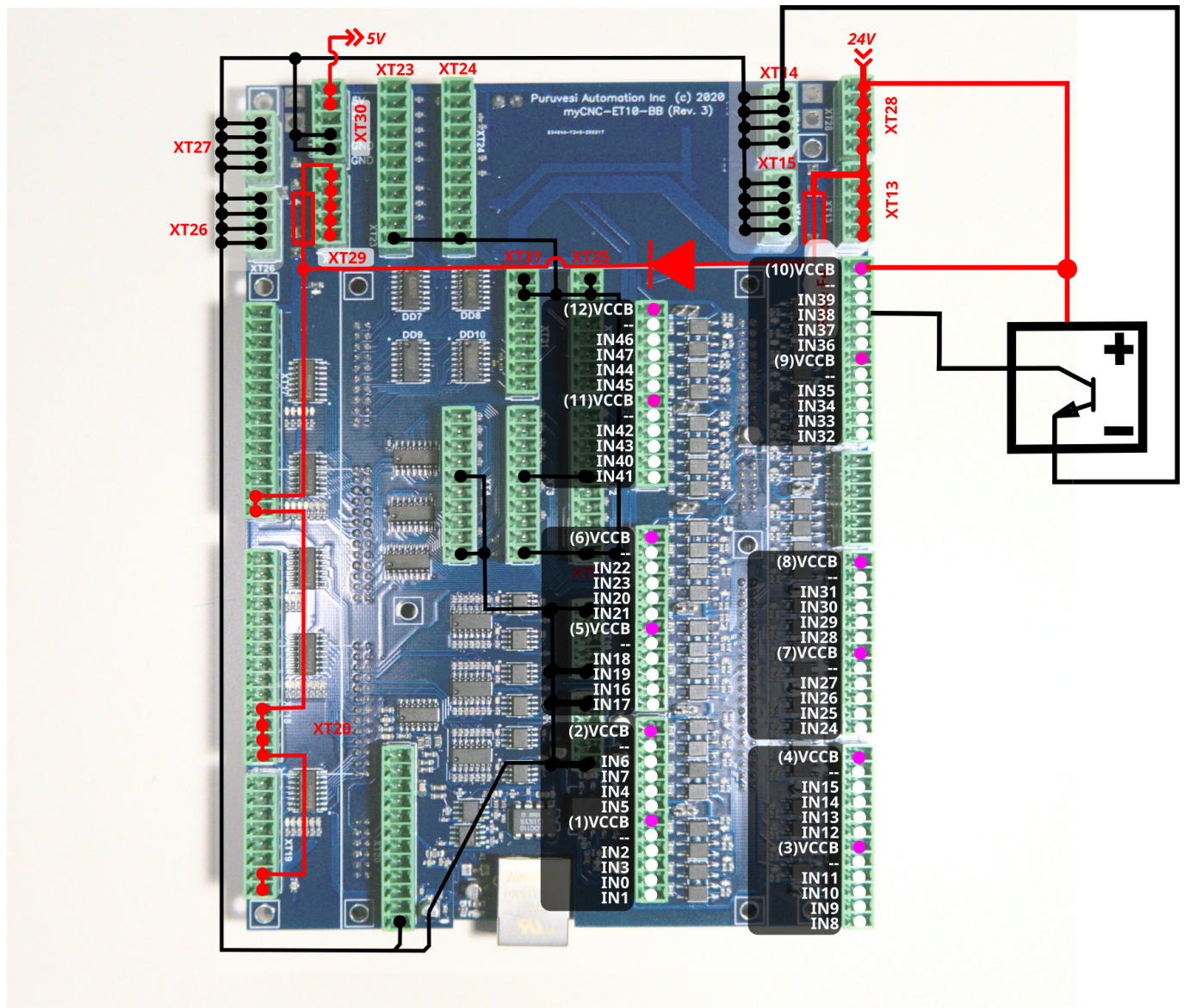
3-wire PNP sensor connection example

External power supply. Jumpers are open.



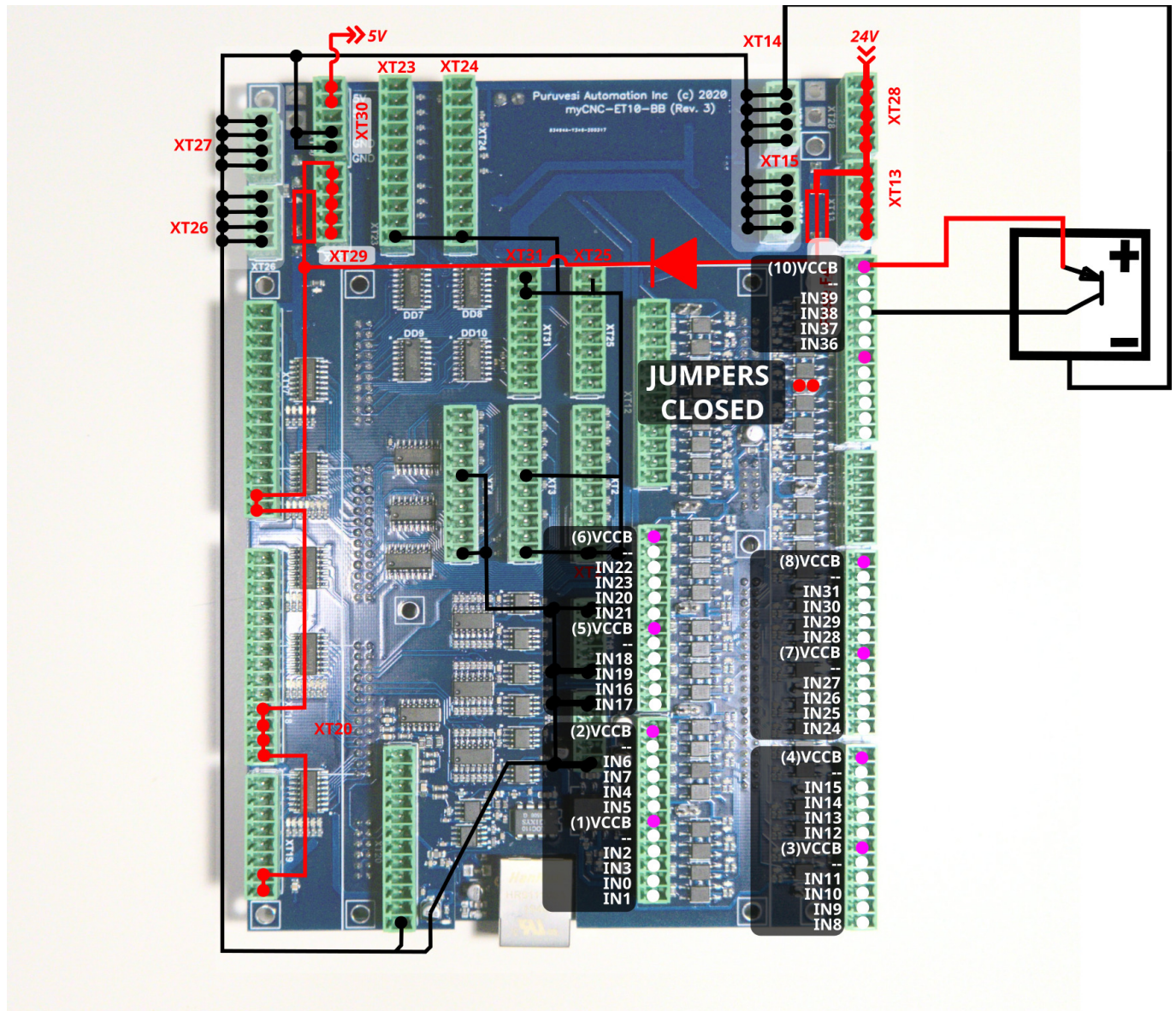
3-wire NPN sensor connection example (internal power supply)

Internal power supply. Jumpers are open.



3-wire PNP sensor connection example (internal power supply)

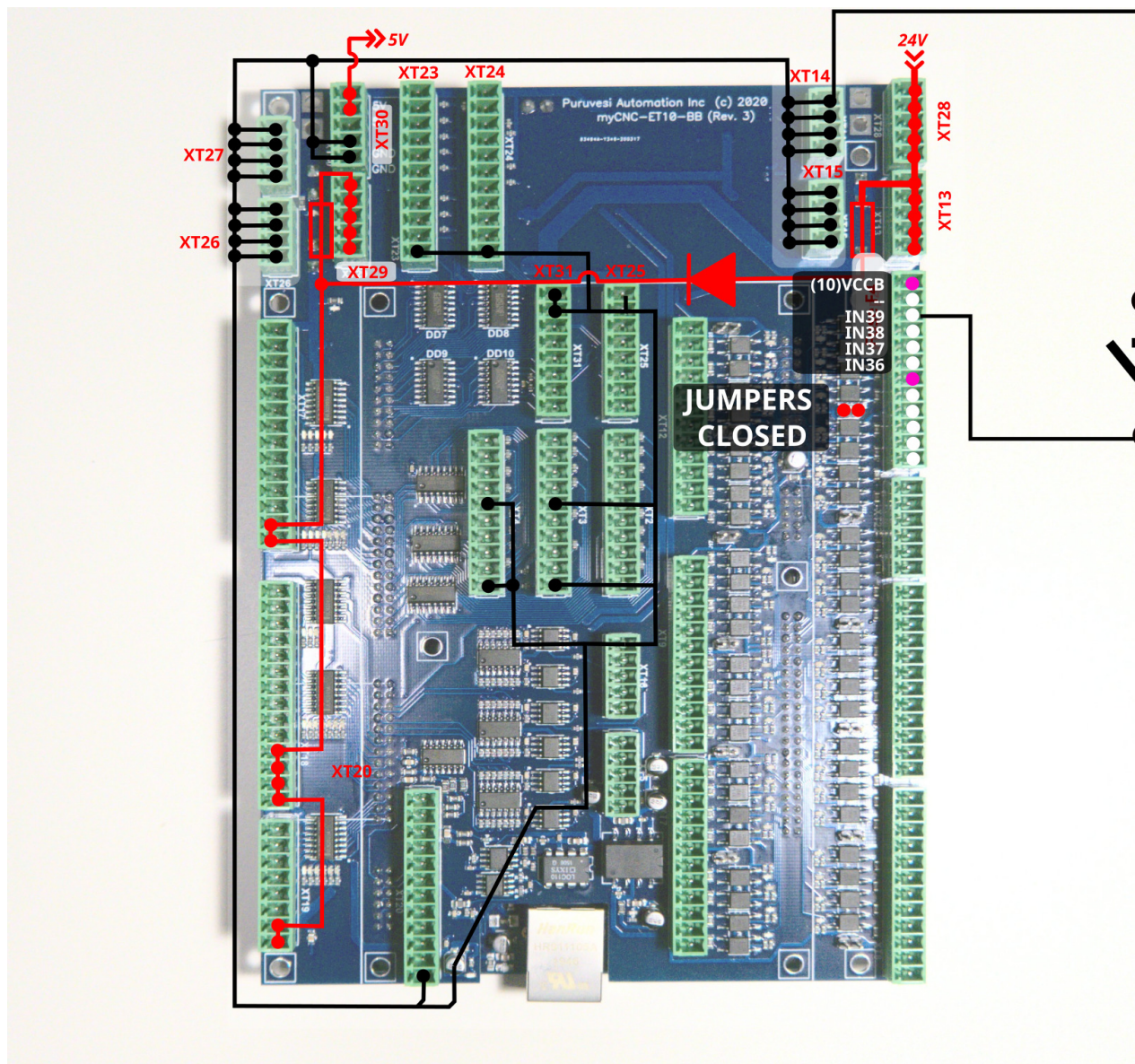
Internal power supply. Jumpers are CLOSED.



Switch connection example

- Internal power supply

Jumpers for selected group are closed.

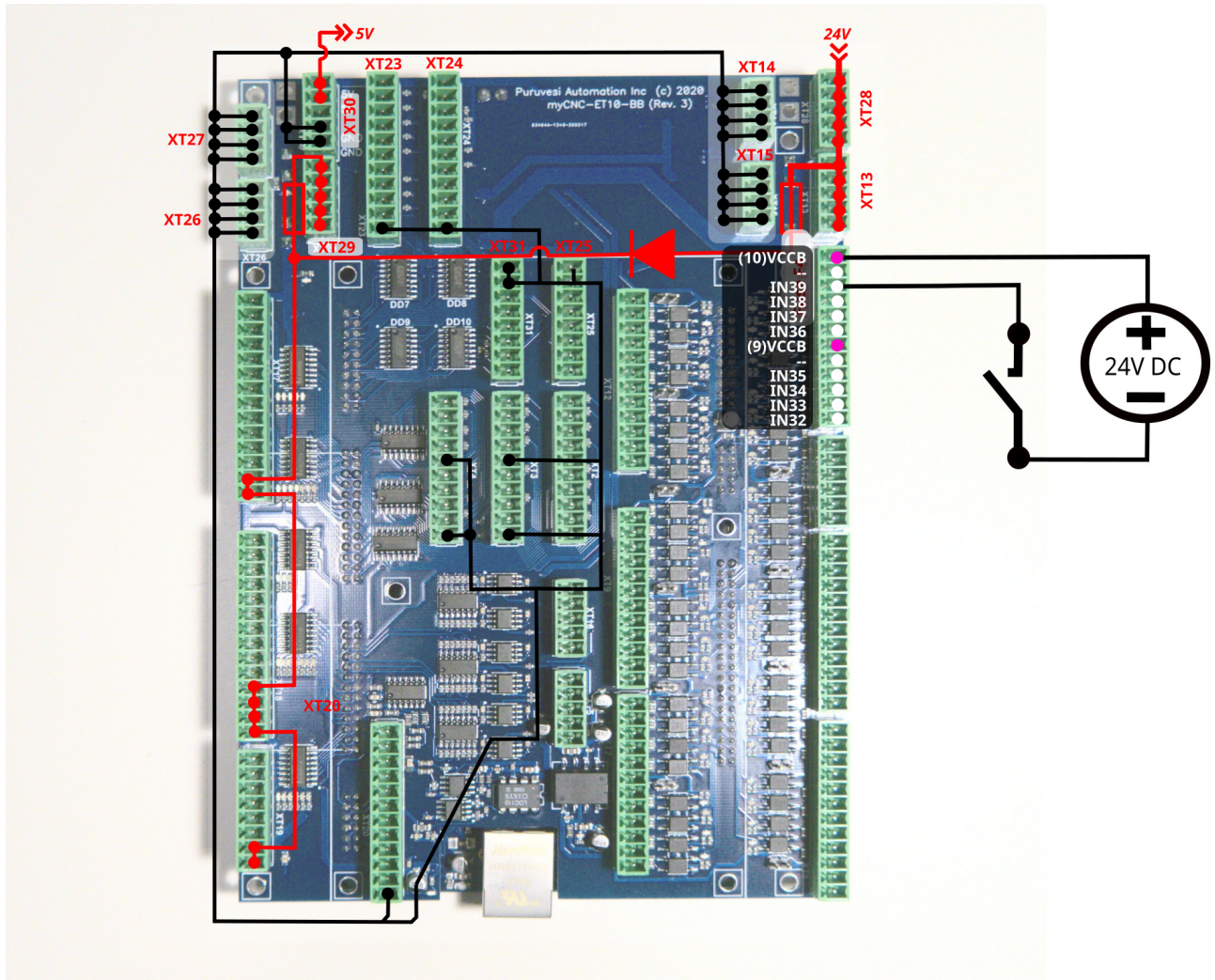


Common wire for 4 optocoupler units is connected to internal power supply.

Jumper should be closed to connect the optocoupler pin to +24V. A switch should short wire to GND(0V).

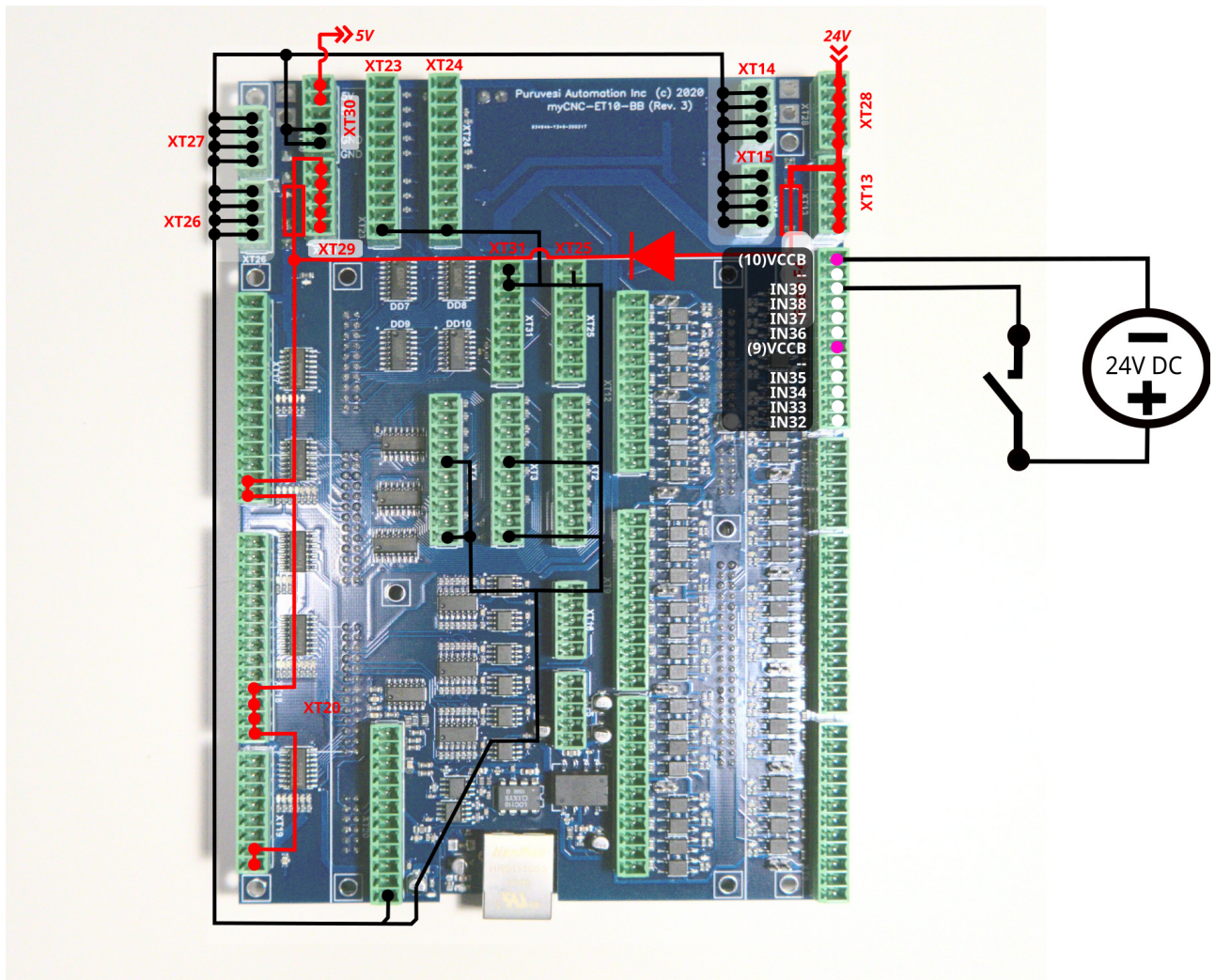
- External power supply (#1)

JUMPERS ARE OPEN



- External power supply (#2)

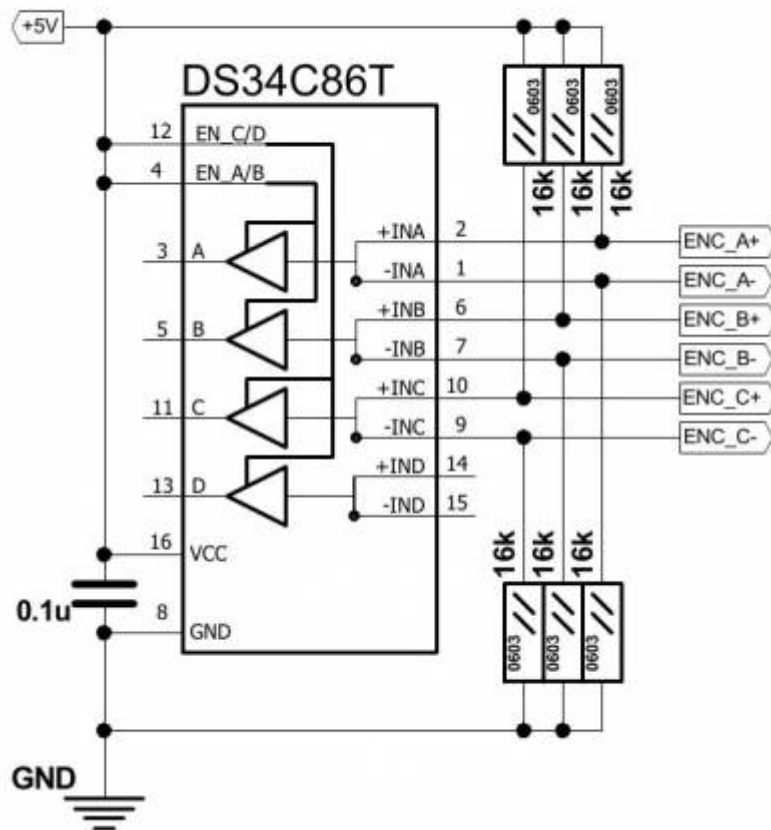
JUMPERS ARE OPEN



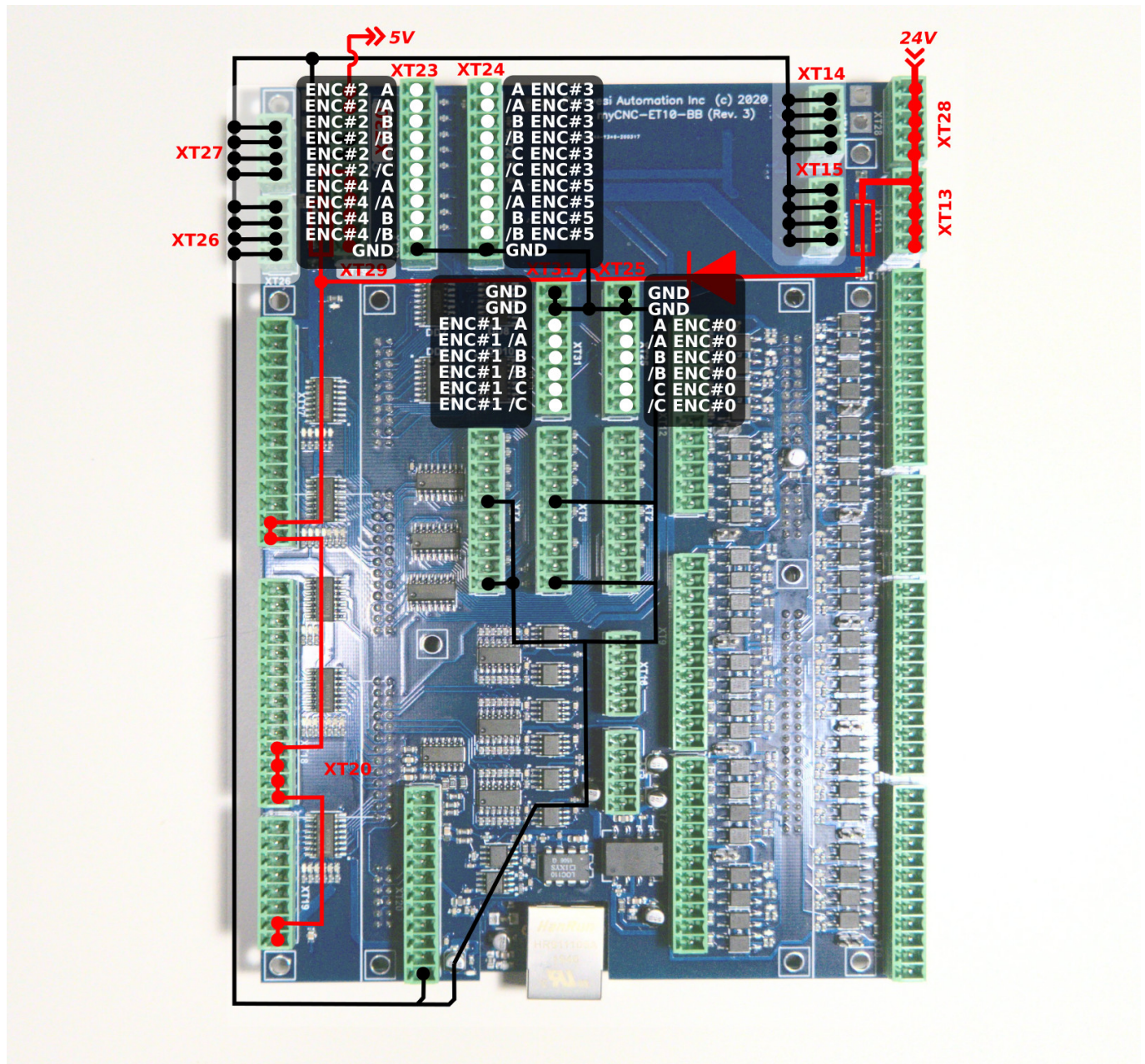
ET10 Encoder inputs

ET10 board has 6 Incremental encoder inputs. There are 4 complete ABC encoder inputs (A/B quadrature encoder signals and Z signal) and 2 reduced AB encoder inputs. ET10 encoder inputs conform to the RS485 standard and are compatible with most of the servo drivers and line driver incremental encoders. 34C86 chip is used in ET10 as a receiver for the encoder signals. Internal schematic for line driver encoder inputs is shown in the picture below.

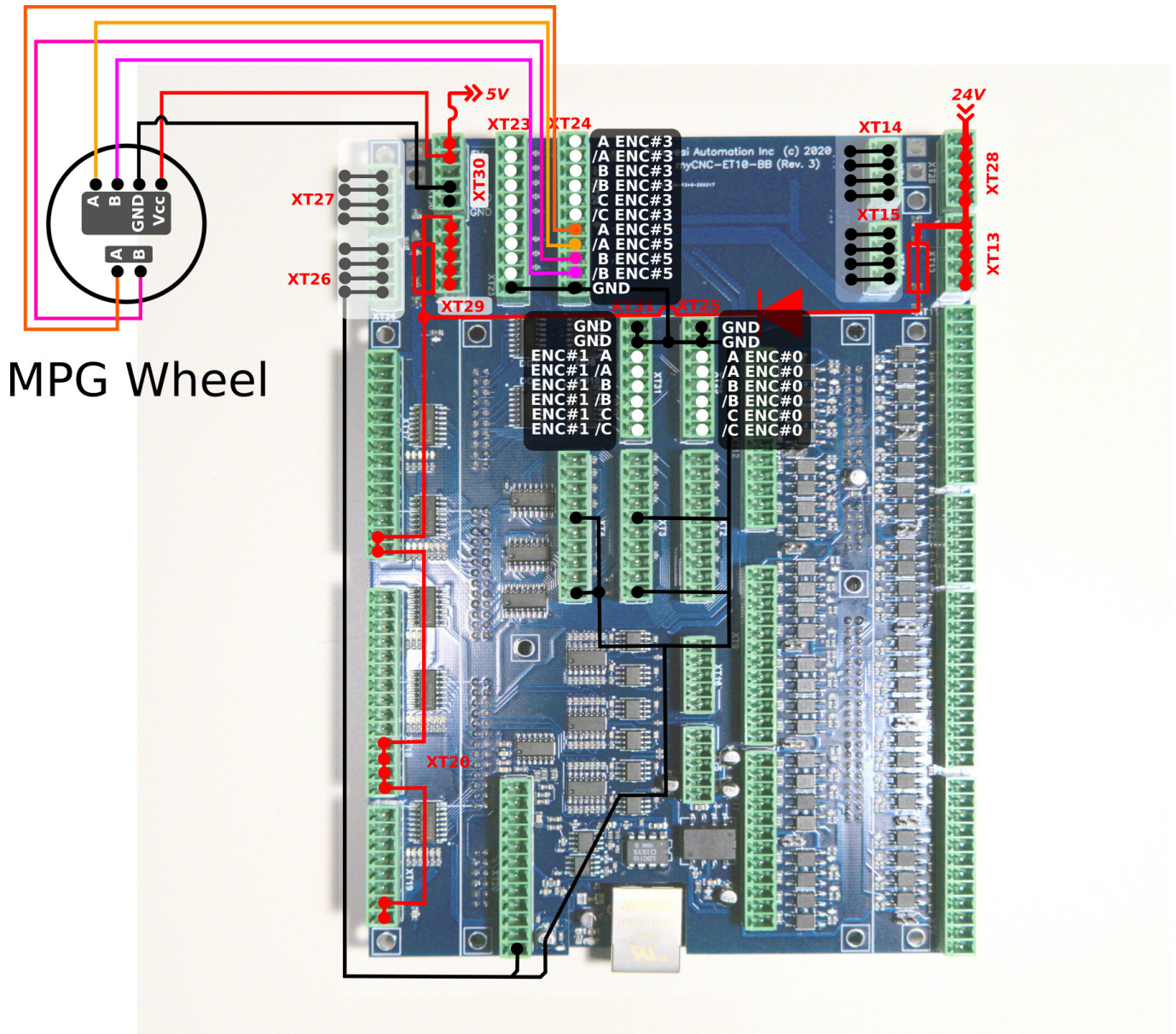
INCREMENTAL ENCODER inputs schematic (1 Encoder, ABC signals are shown)



ENCODERS channels 0,1,2,3,4,5 pinout



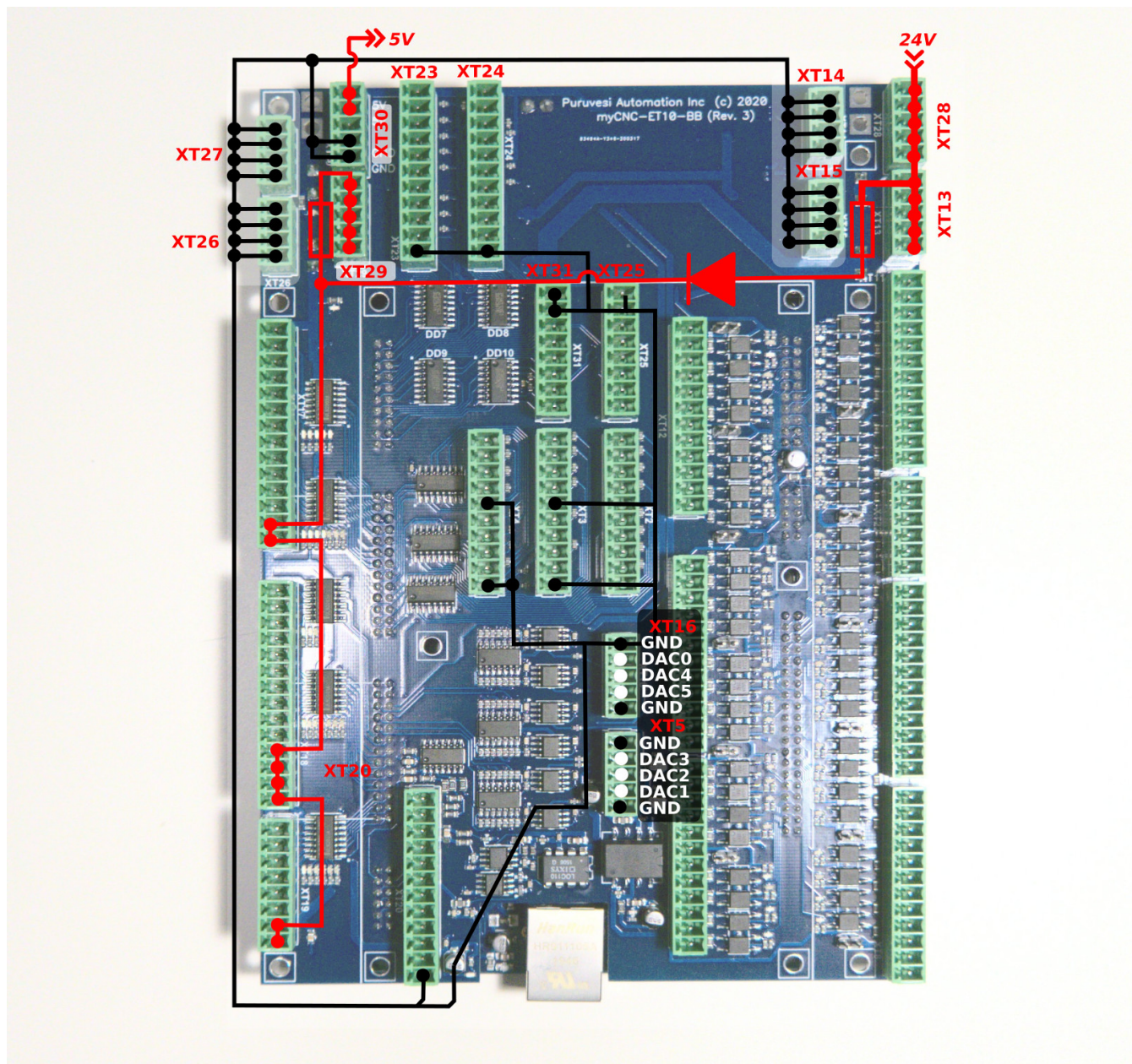
An example below shows an MPG wheel connected to the ET10 encoder ports:



ET10 DAC +/-10V DAC outputs

ET10 control board contains 6 channel +/-10V DAC outputs. This outputs can be used for analogue servo drivers closed-loop control, spindle speed control or any other application that requires IN analog signals in +/-10V range.

Connectors XT16 and XT5 are used to connect DAC outputs. The connectors pinout is shown in the picture below



Please check if the DACs are not in test mode before using.

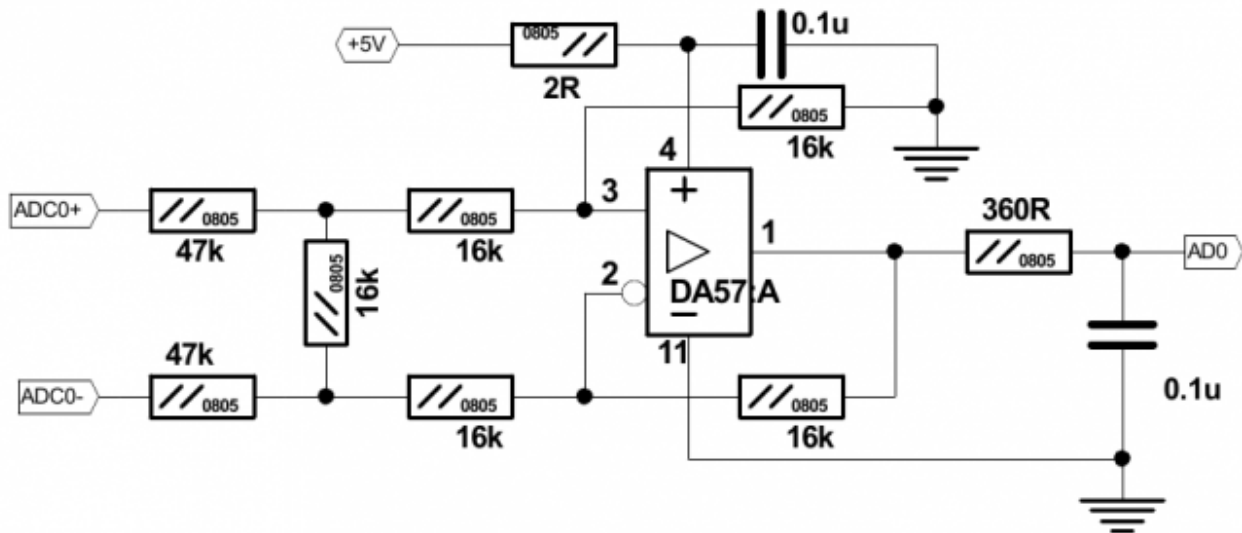
ADC Inputs

The big difference in the ADC inputs from the ET10R2C board is that the ET10R3C board features an ADC channel with galvanic isolation for usage THC in plasma cutting setups, designed for the 0-5V range.

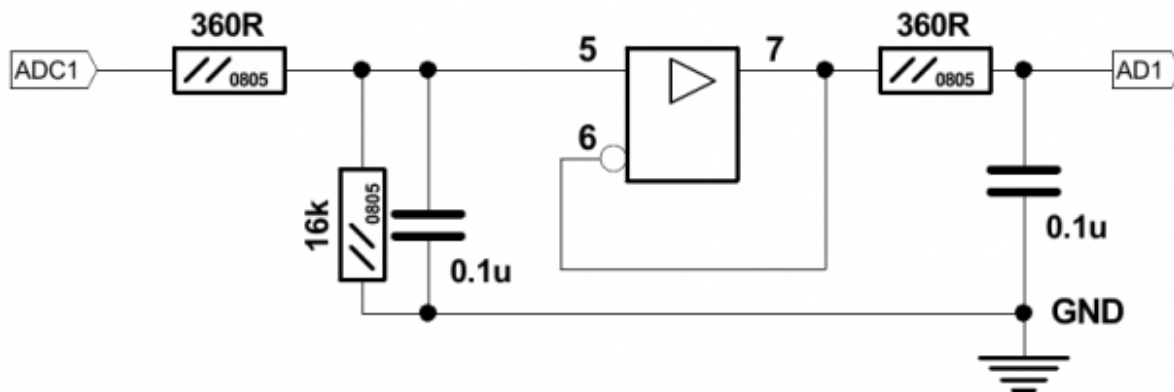
Below is a table with all available ADC inputs and their descriptions:

Input	Description
#0, #1, #2, #3, #5, #6	Conventional 3.3V
#4	Differential 5V, galvanically isolated
#7	Differential 30V

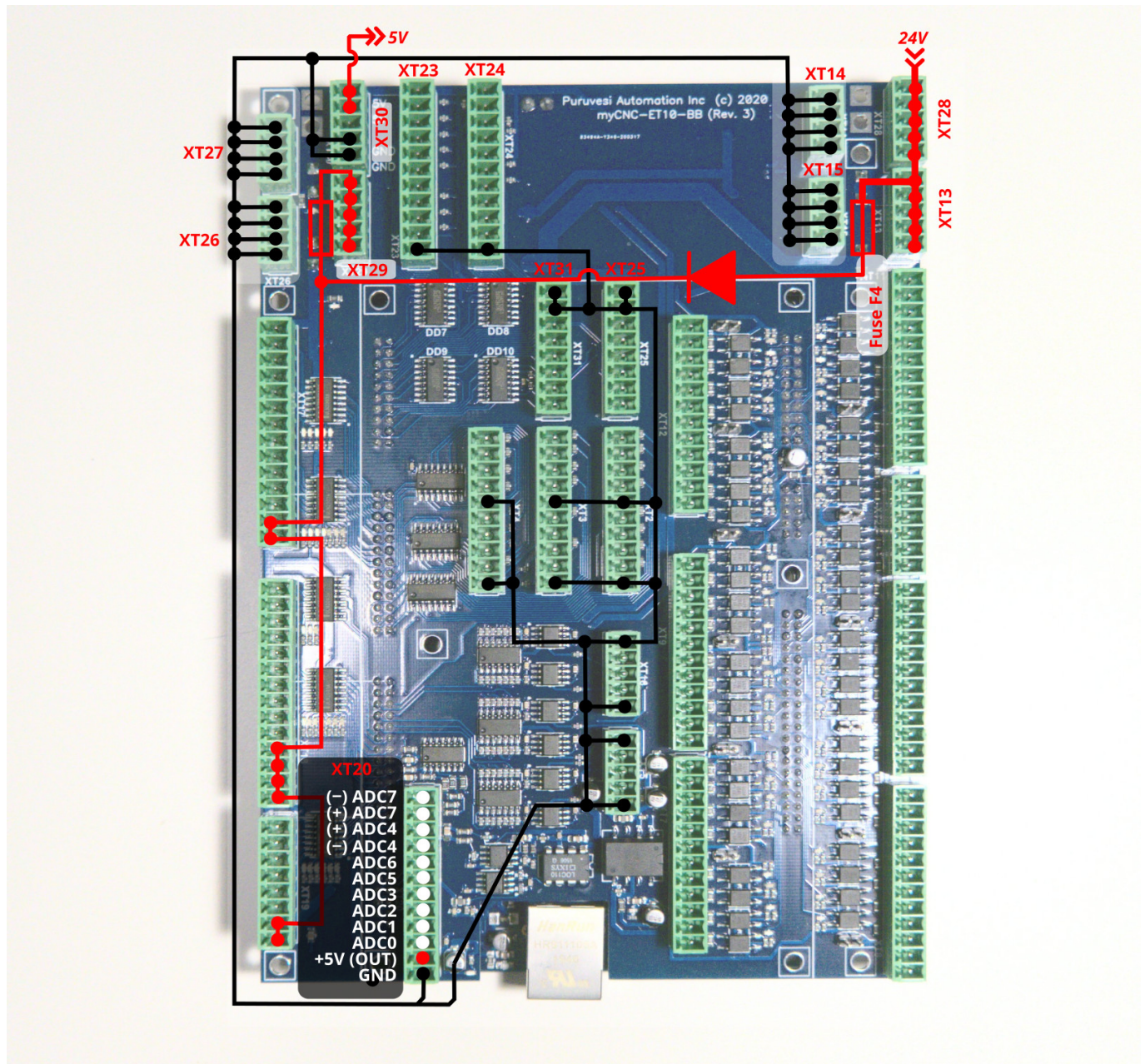
Input schematic of ET10 differential ADC input (Channel#0) is shown below.



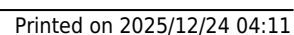
Input schematic for ET10 0-5V ADC inputs (Channels#1...#7)

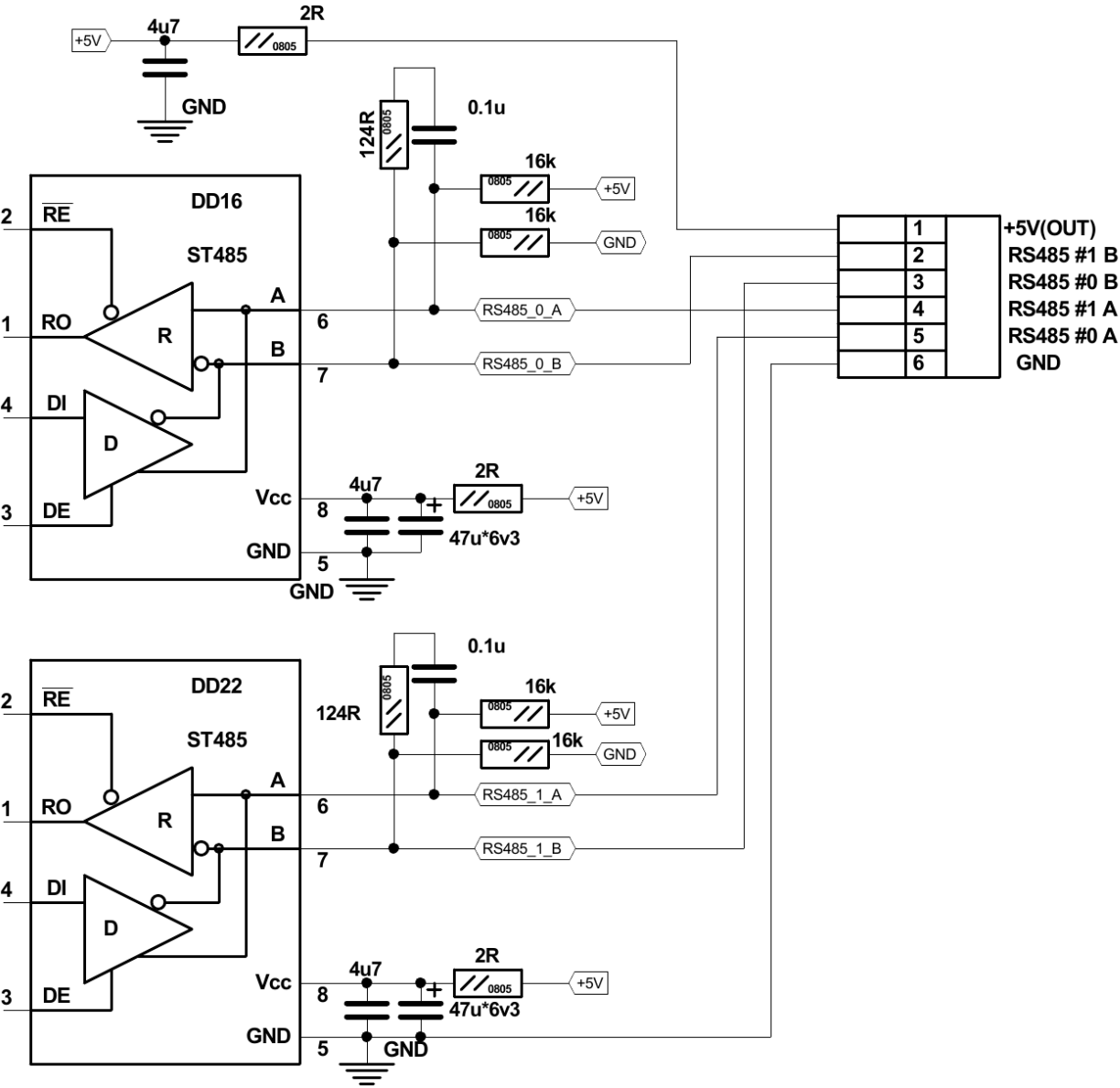


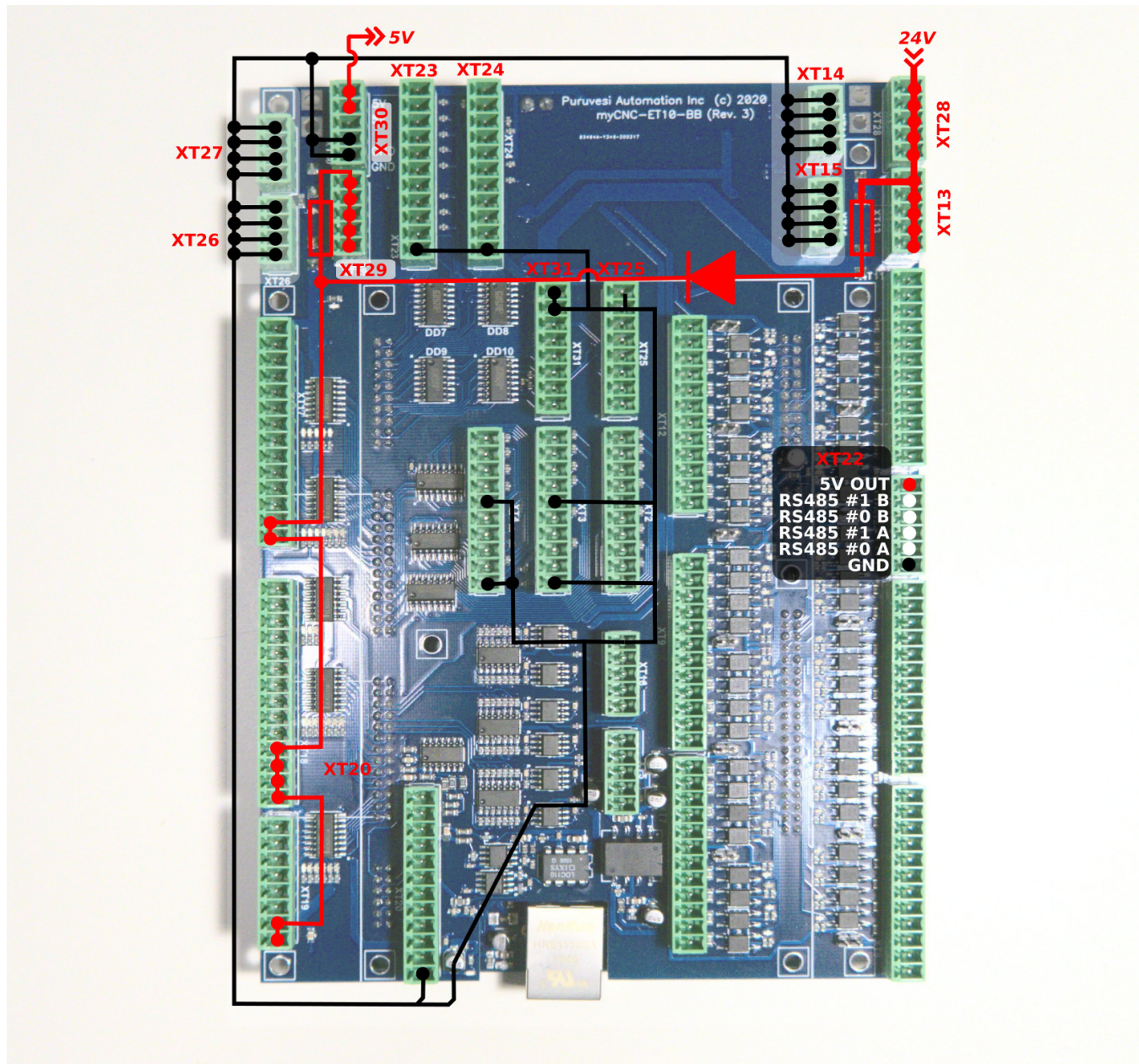
Connectors XT20, XT21 are used to connect ADC inputs. The connector pinout is shown below



The picture below shows an example of a potentiometer connected to ADC2 input.

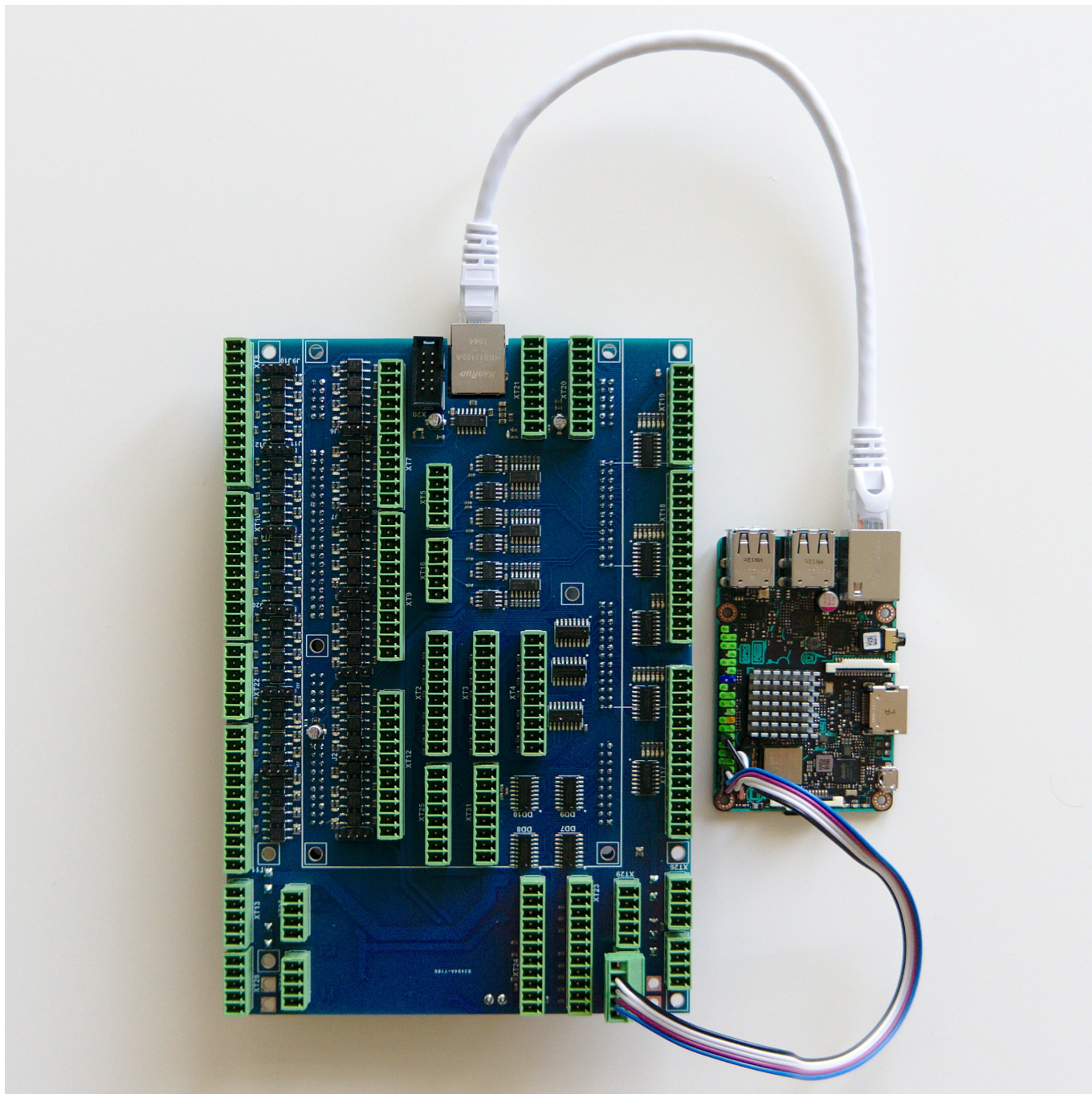






ET10 Single-Board Computer connection

The single board computer (such as a TinkerBoard) should be connected to the myCNC-ET10 controller board in a way shown in the photo below:



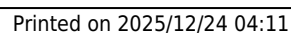
Note that the connection **MUST** be done to the 5V/GND ports of the XT30 connector block and not to the 24V ports of the XT29 block which is located right next to it. Incorrect connection of the power supply may cause damage to the computer.

Board dimension

myCNC-ET10 breakout board dimension

PDF: <http://cnc42.com/downloads/et10bb-r9.pdf>

DXF: <http://cnc42.com/downloads/et10bb-r9.dxf>



and recommends seeking an explicit confirmation from the support team that the firmware reflash is warranted in order to avoid issues.



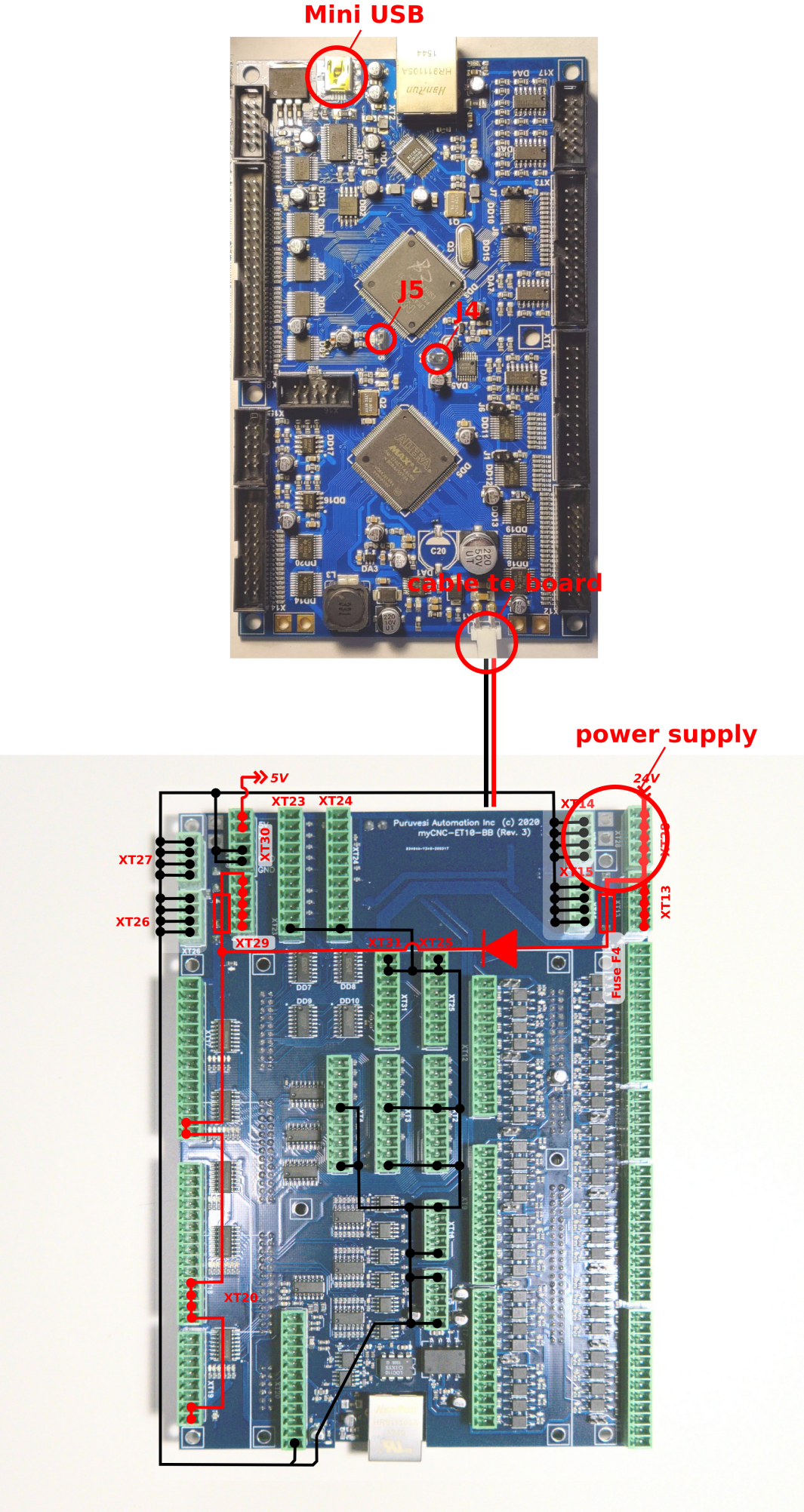
NOTE: Make sure to select the firmware for the correct version/revision of your board! Firmware for ET10 boards (R1-R3) and ET10 boards (R4-R5, also known as the ET12) are DIFFERENT. Flashing incorrect version of the firmware will result in a non-functional board. If you're unsure of your board version, please contact myCNC Technical Support prior to the reflash:

ET10

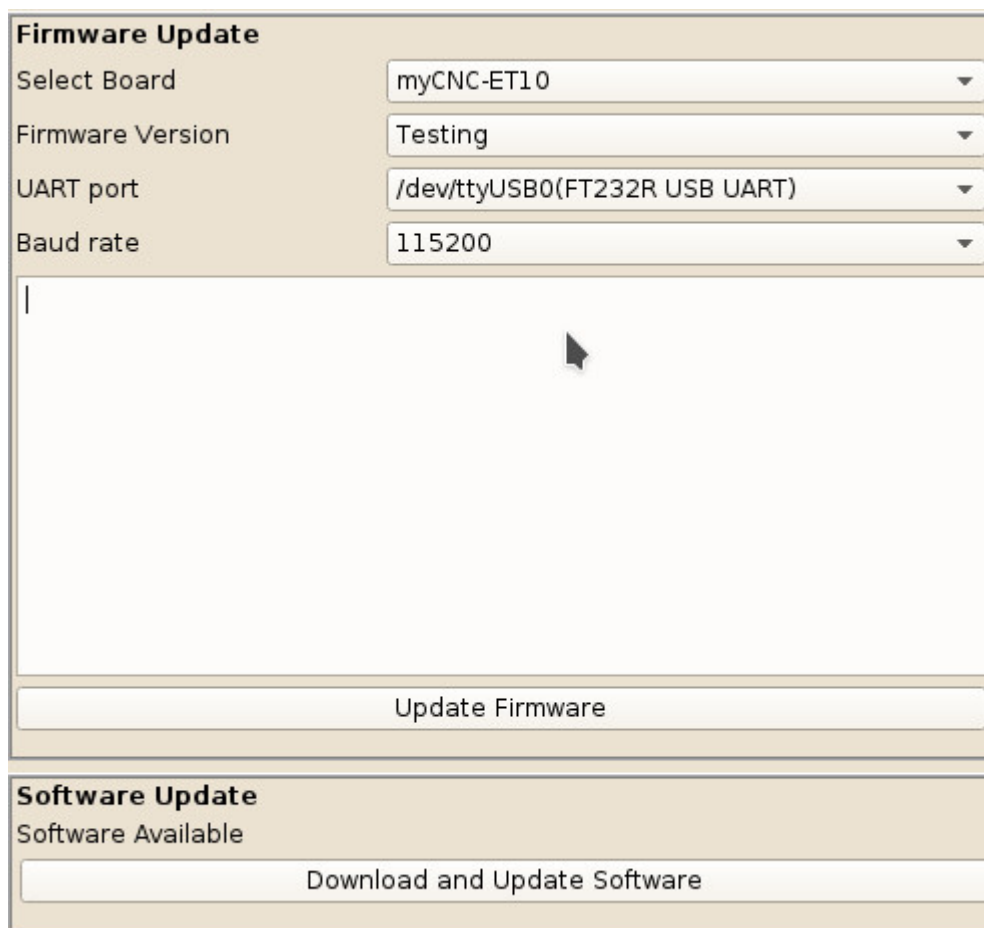
ET10-R4/R5 (ET12)

ET10-PWM

To reflash the board



1. Unplug the 24V DC power supply and detach the ET10 controller from the Breakout board
2. Plug 24V DC supply
3. Short power cable between ET1 and Breakout leave connected.
4. Plug in the mini-USB cable to ET10 & Host Computer with myCNC installed
5. Close jumpers J4(reset) & J5 (programming) on the myCNC controller board
6. Open (remove) the J4(reset) jumper.
7. Open myCNC software on the Host computer, then go to Settings > Support Tab
8. "Select board" set to "myCNC-ET10". Make sure to select the correct revision version.
9. Select "Firmware version" from "Release", "Night build" or "Testing"
10. "UART port" select port with FT232 attached
11. Baud Rate set to "115200" for ET10; other baudrate can be selected in case of issues with the 115200 speed



The screenshot shows the 'Firmware Update' section of the myCNC software. It contains four dropdown menus: 'Select Board' set to 'myCNC-ET10', 'Firmware Version' set to 'Testing', 'UART port' set to '/dev/ttyUSB0(FT232R USB UART)', and 'Baud rate' set to '115200'. Below these is a large empty text area with a cursor. At the bottom of this section is a button labeled 'Update Firmware'. Below the 'Firmware Update' section is the 'Software Update' section, which has a label 'Software Available' and a button labeled 'Download and Update Software'.

12. Press "Update Firmware" button, Firmware download and the reflashing process will be started.
13. Sector 0 will be written at the end of process, so message in debug window "Sector 0; +" means reflashing process was completed successfully.

