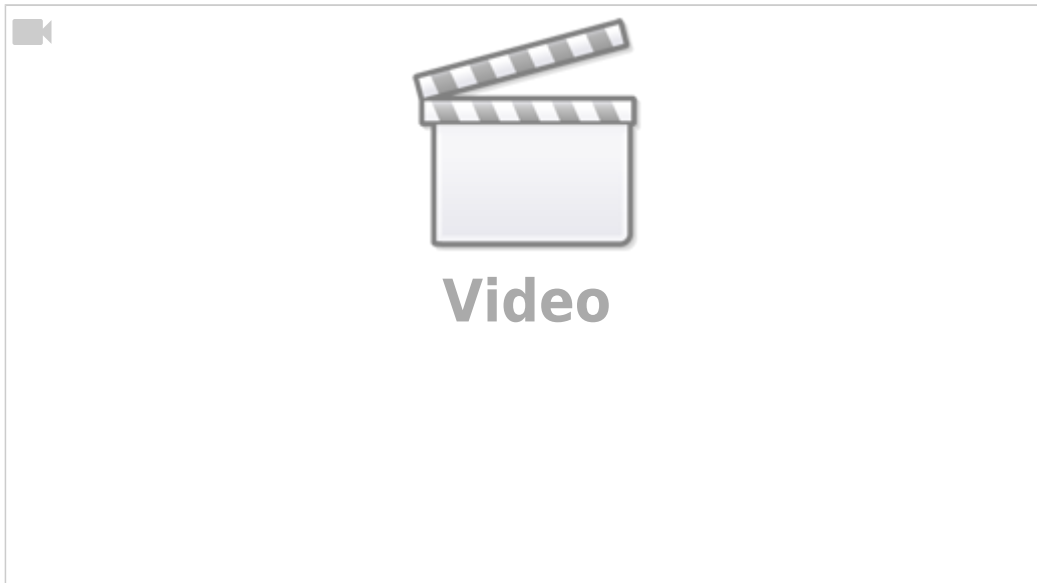


# Macro Language

A video recap of this manual is available on our YouTube channel:

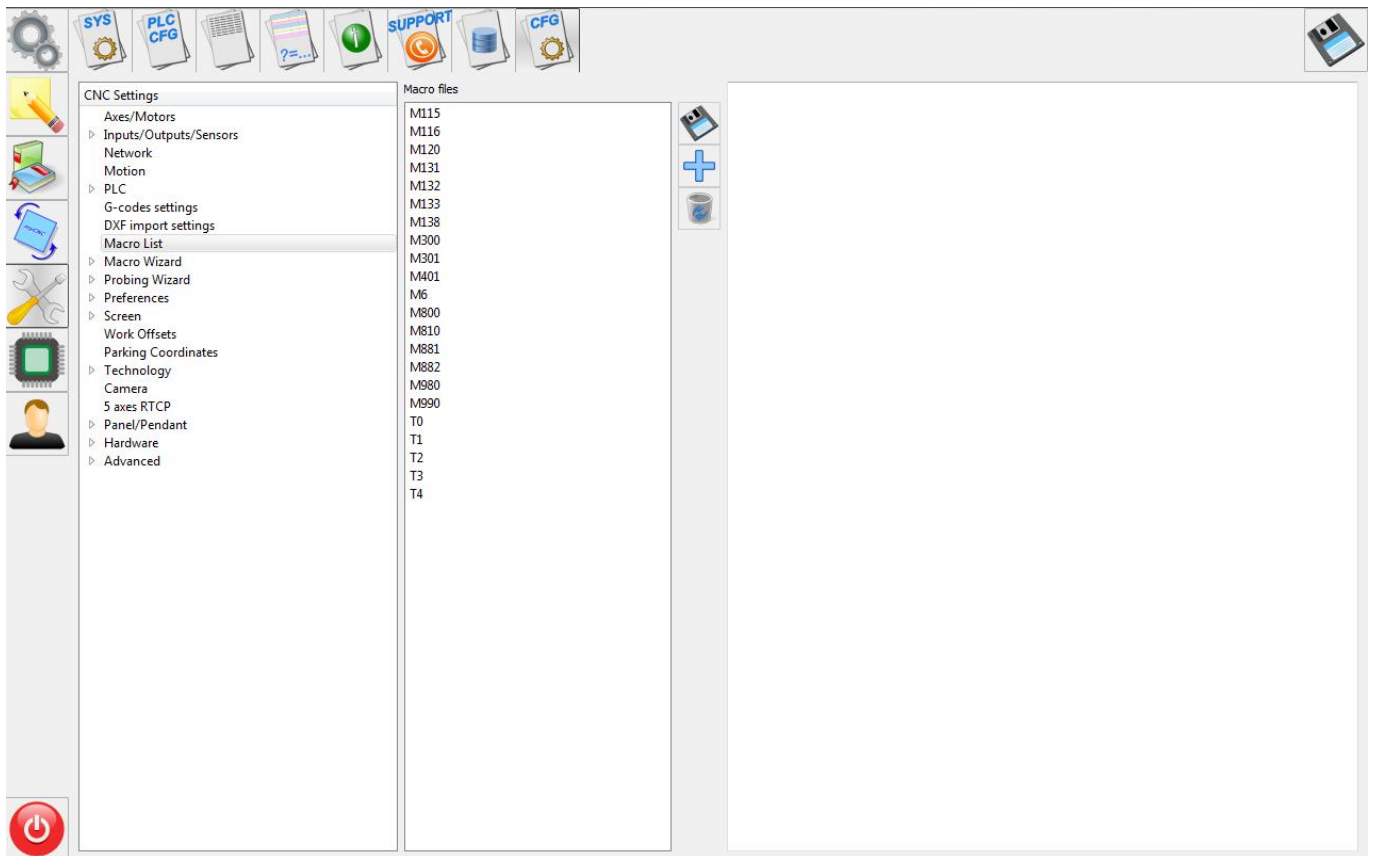


- **#** - All variables in Macro language started from **#** symbol and have number (address) in range 0...16000. However variables address higher than 1000 are considered as System Global Variables. It's possible to read and write to Global Variables but User should understand this may change system behavior. Variables in range 1...999 are User space variables. These variables are not changed by CNC control, modifying these variables does not affect system work
- **=** - Symbol **=** is used to assign value to Variable
- Operators
  - **+** addition
  - **-** subtraction
  - **\*** multiplication
  - **/** division
  - **REM** modulus operator - remainder
  - **MOD** modulus operator - quotient
- Logic operators
  - **GT** - greater than
  - **GE** - greater or equal than
  - **LT** - less than
  - **LE** - less or equal than
- **[]** - Square brackets are used to change operation priority (instead of round brackets which are used in g-code language as Comment).
- [Macro examples](#)
  - [Move A to 0](#)
  - [M6 Tool Change Macro](#)

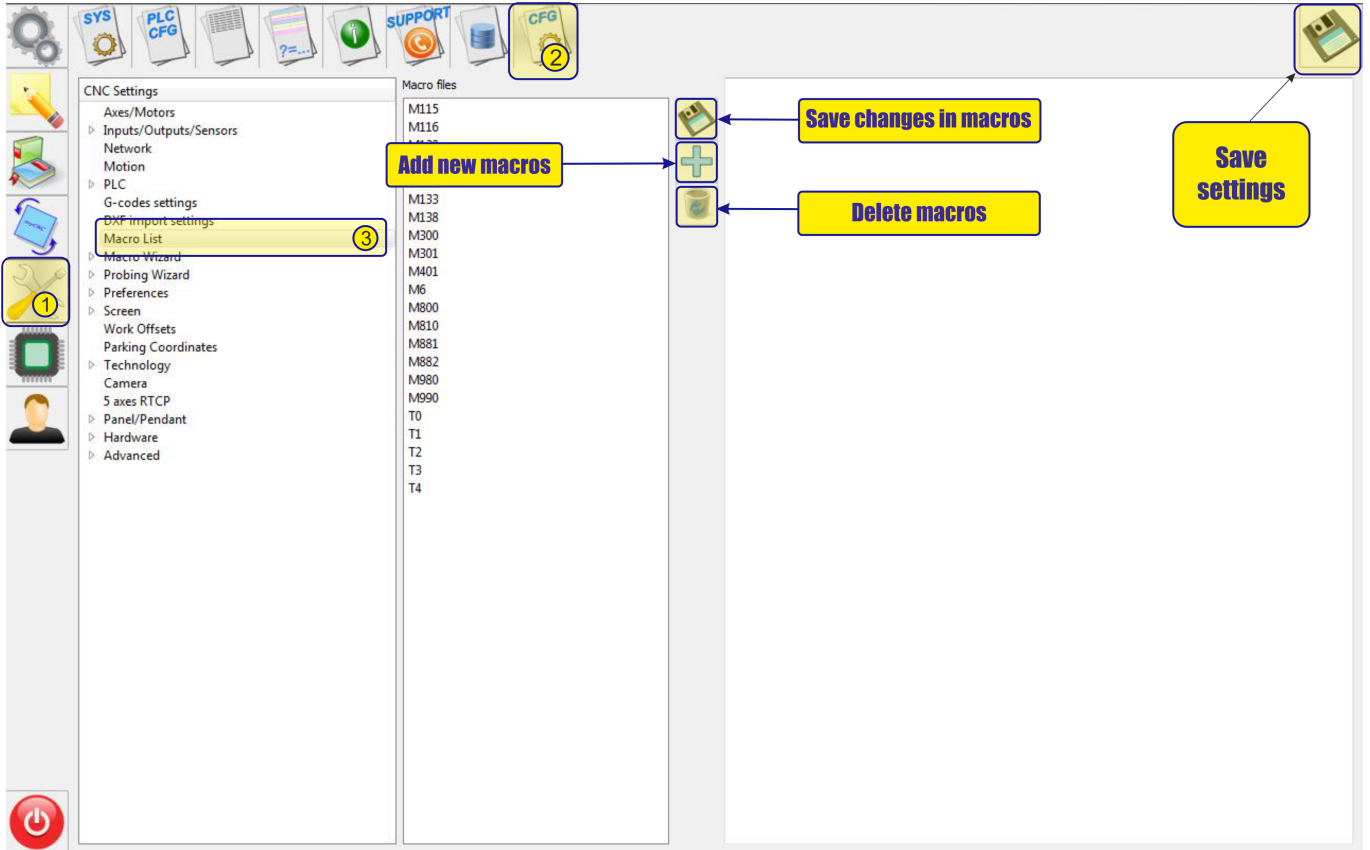
## Macros list

“myCNC” has a built-in “Macros list” editor for creating and editing macros. The main functions of the editor are presented below.

## Basic window

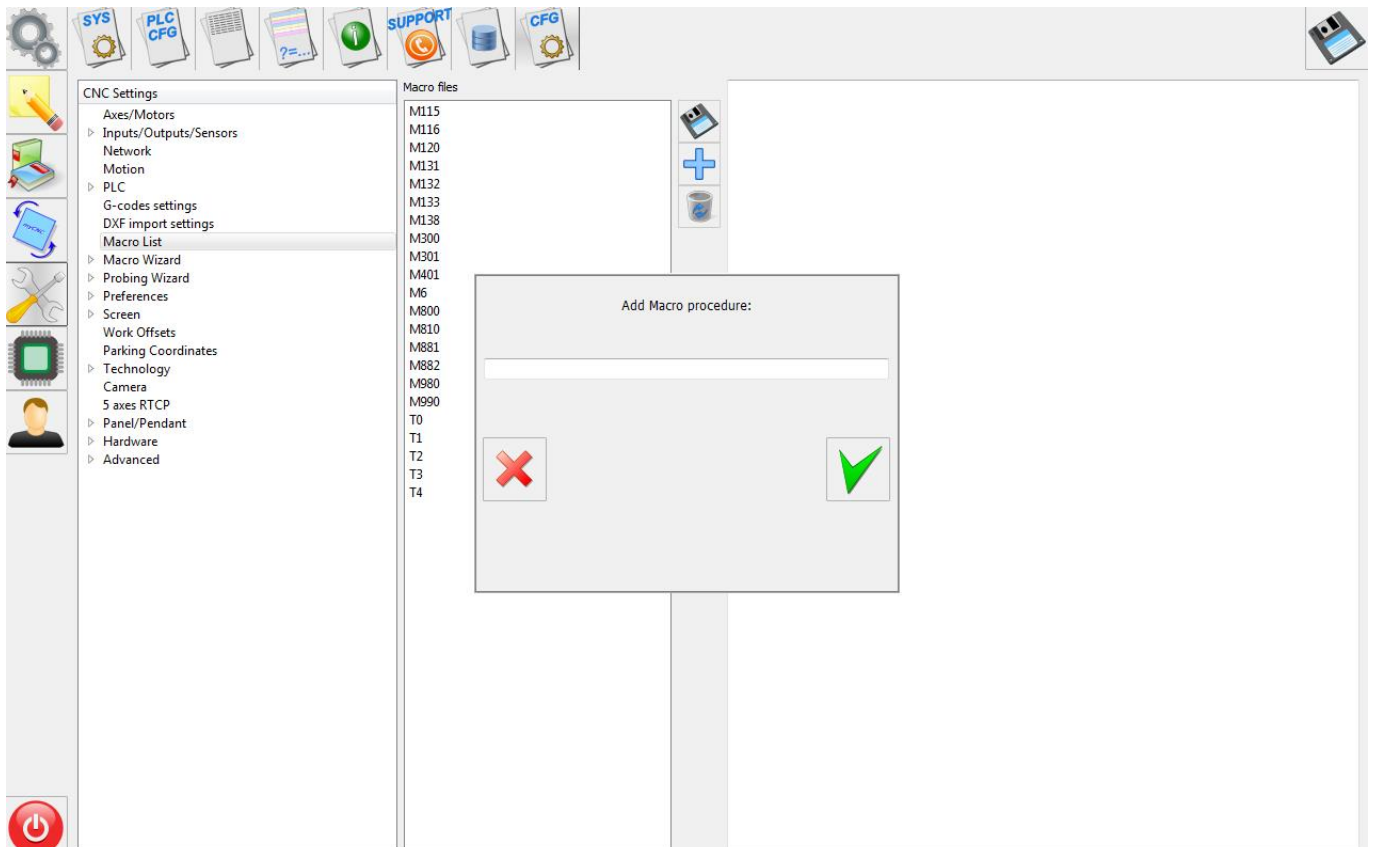


## Main functions



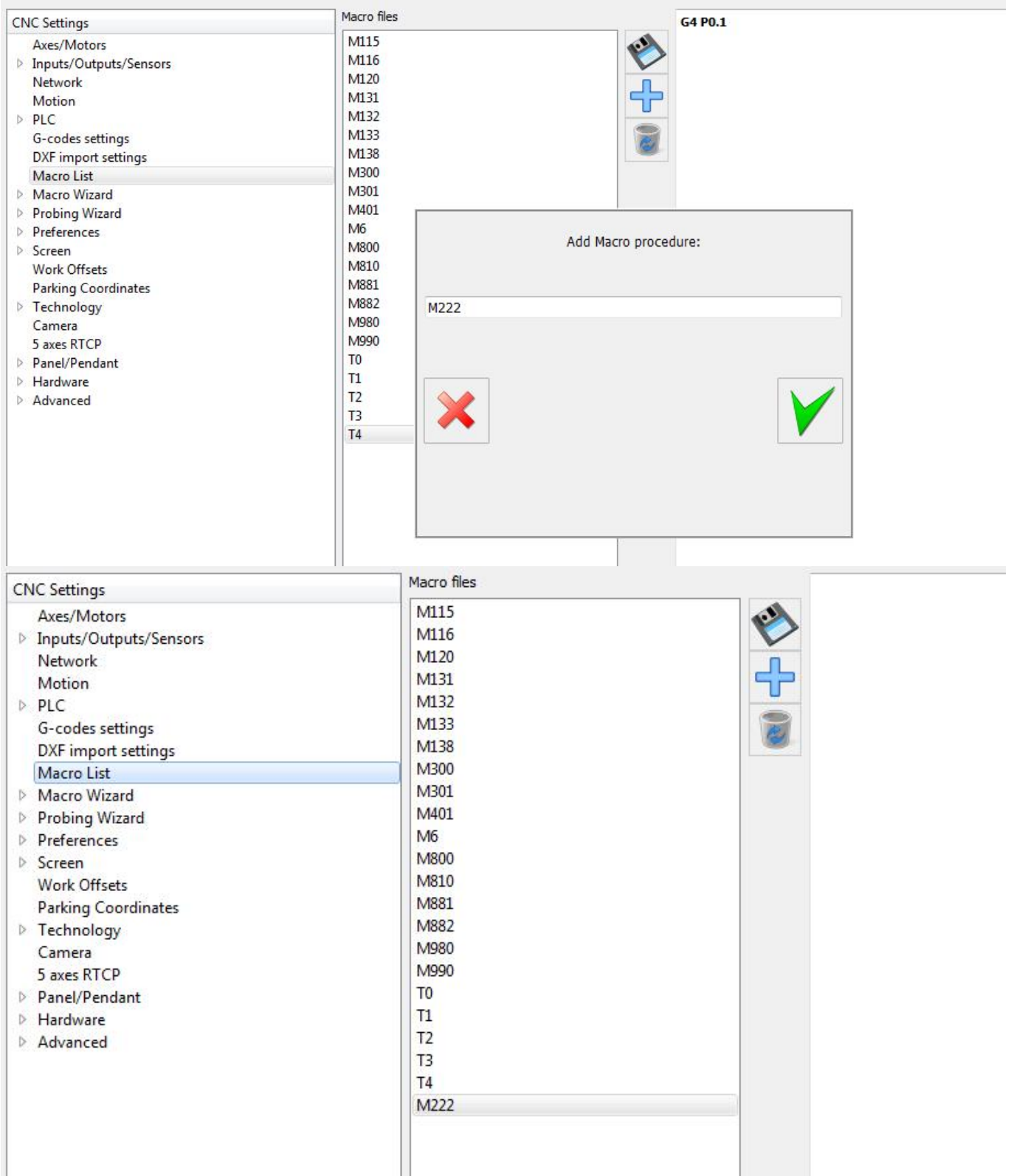
### Function "add macros"

To create a macro, you need to click the “+” icon and in the field that appears, enter the corresponding name of the macro.

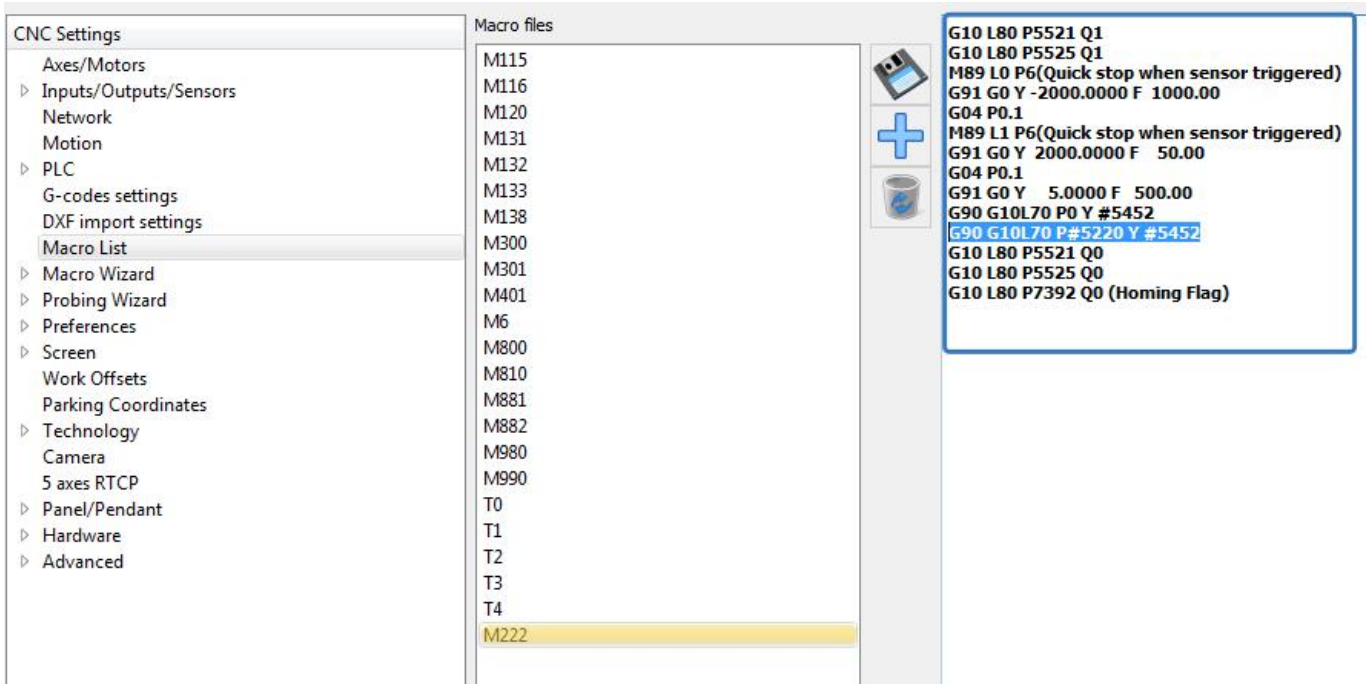


After confirmation of creation, using the “V” icon, the macro will appear in the list of saved macros.

Below is an example of creating a macro named "M222".



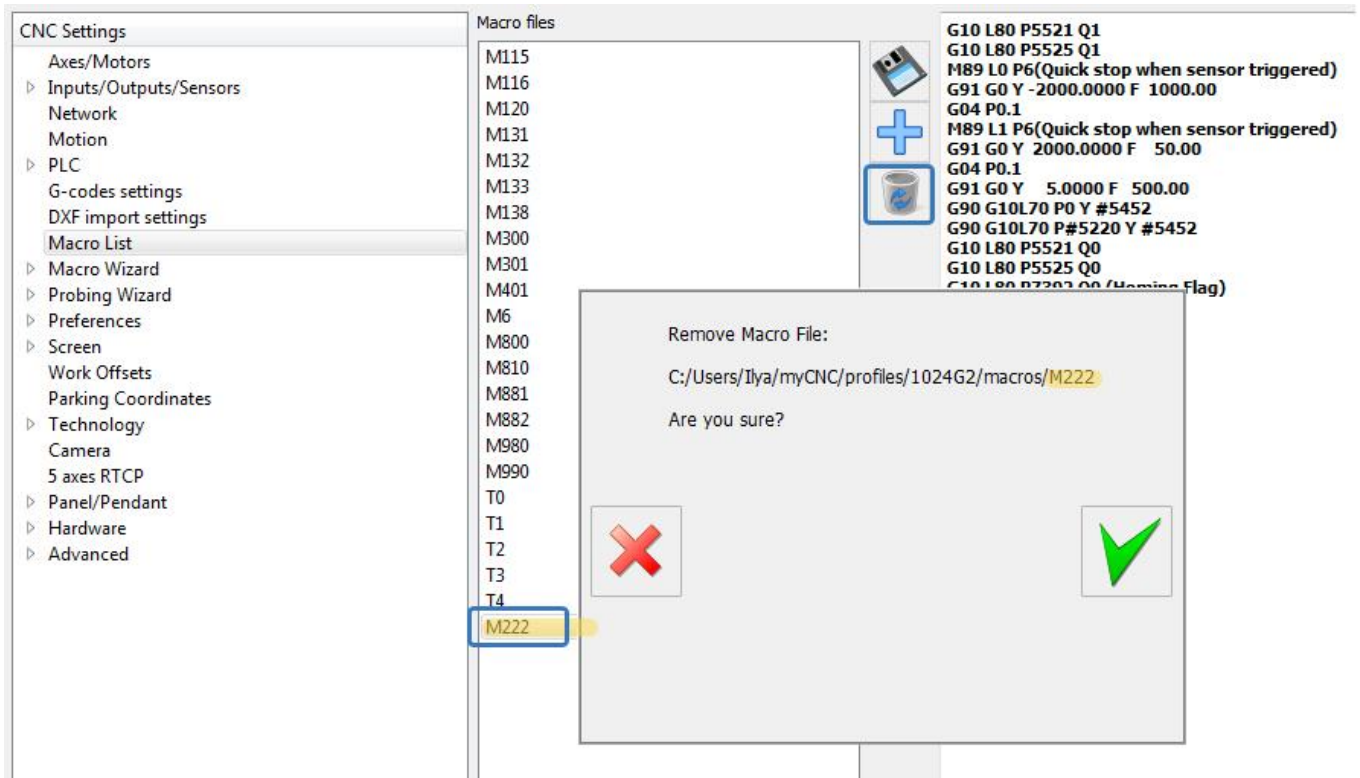
After creating a macro, you can start editing it. To do this, simply select the desired macro and start editing it in the corresponding macro listing window. Below is edit of creating a macro named "M222".



After creating and editing a macro, it must be saved using the “save changes in macro” button

### Delete macros

To delete a macro that is not needed, you must select the macro to be deleted and use the function “delete macro”. In the dialog box that appears, you must either confirm or refute the deletion of the macro.



### Examples of macros

## M120 - Surface measure

### M120.plc

```

main()
(Surface measure)
(Tool is placed somewhere above the surface sensor)
(Surface Sensor Width is placed into Parameter #5490)

G28.2 Z0.      (save current z position into Register1.Z (value with Z
doesn't matter))
G53 G38.2 Z-10. (move down to z=-10., stop while sensor is pressed)
G10 L70 P1 Z#5490 (set current work position as Z=0 (with offset
depends on tool sensor width))
G28.5 Z0.      (return back to saved Z position in Register1.Z (value
with Z doesn't matter))

```

## M140 - Homing for X coordinat

### M140.plc

```

main()
G10 L80 P5521 Q1
G10 L80 P5525 Q1
M88 L1 P19(Soft stop when sensor triggered)
G91 G0 X 15000.0000 F 8000.00
G04 P0.1
M88 L0 P19(Quick stop when sensor triggered)
G91 G0 X -15000.0000 F 8000.00
G04 P0.1
G91 G0 X 20.0000 F 500.00
G90 G10L70 P0 X #5451
G10 L80 P5521 Q0
G10 L80 P5525 Q0
G10 L80 P7391 Q0 (Homing Flag)

```

*Quick note: in system macros (especially in which coordinates are reassigned and/or reset), G0 positioning codes must be used.*

## Repeat Test

```

G10 L80 P5521 Q1 (Disable Software Limits)
G10 L80 P5525 Q1 (Disable Hardware Limits)

#l0=1 (Initialize register value)

```

N20

```
M88 L1 P14 (Soft stop when sensor triggered)
G91 G0 Y 10.6 F 600.00 (Move to sensor)
G04 P0.2 (Pause)
```

```
M220 (Check coordinate, print it)
```

```
G90 G0 Y -10.0000 F 600.00
```

```
#10=#10+1 (Increment register)
```

```
if [ #10 LT 100 ] 20 (Repeat 100 times)
```

From:

<https://docs.pv-automation.com/> - **myCNC Online Documentation**

Permanent link:

[https://docs.pv-automation.com/mycnc/macro\\_language](https://docs.pv-automation.com/mycnc/macro_language)

Last update: **2022/03/29 16:15**

