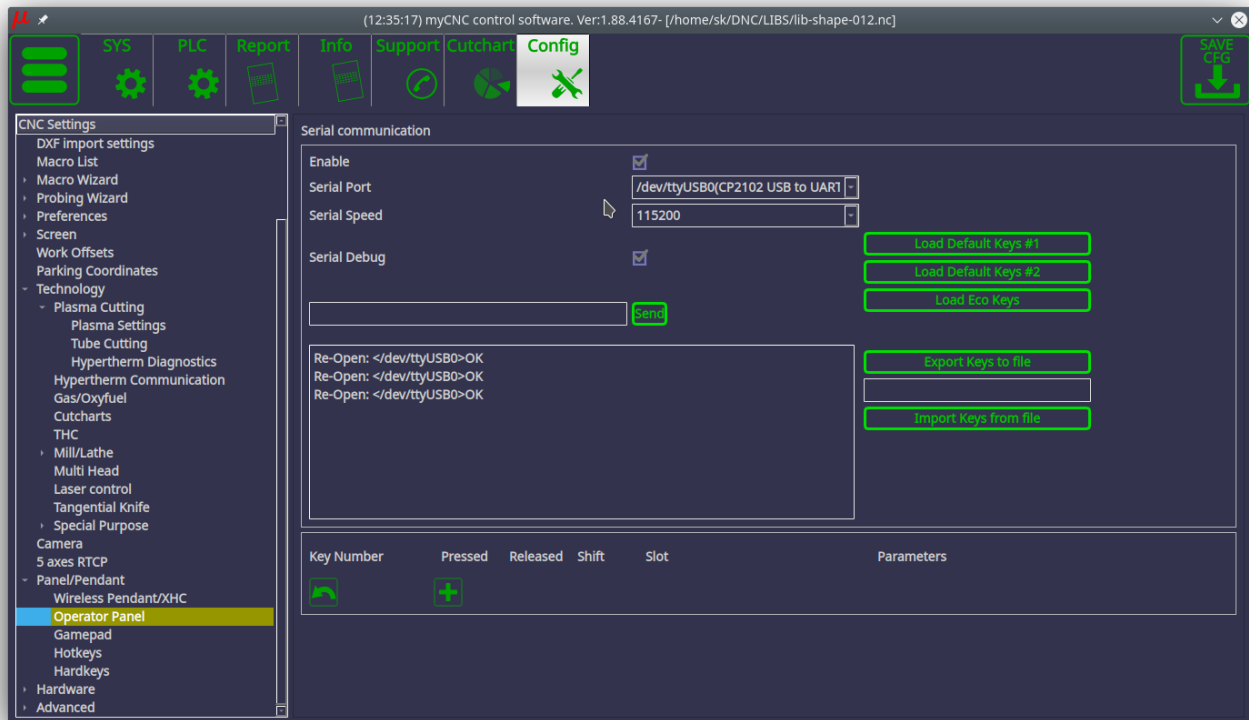


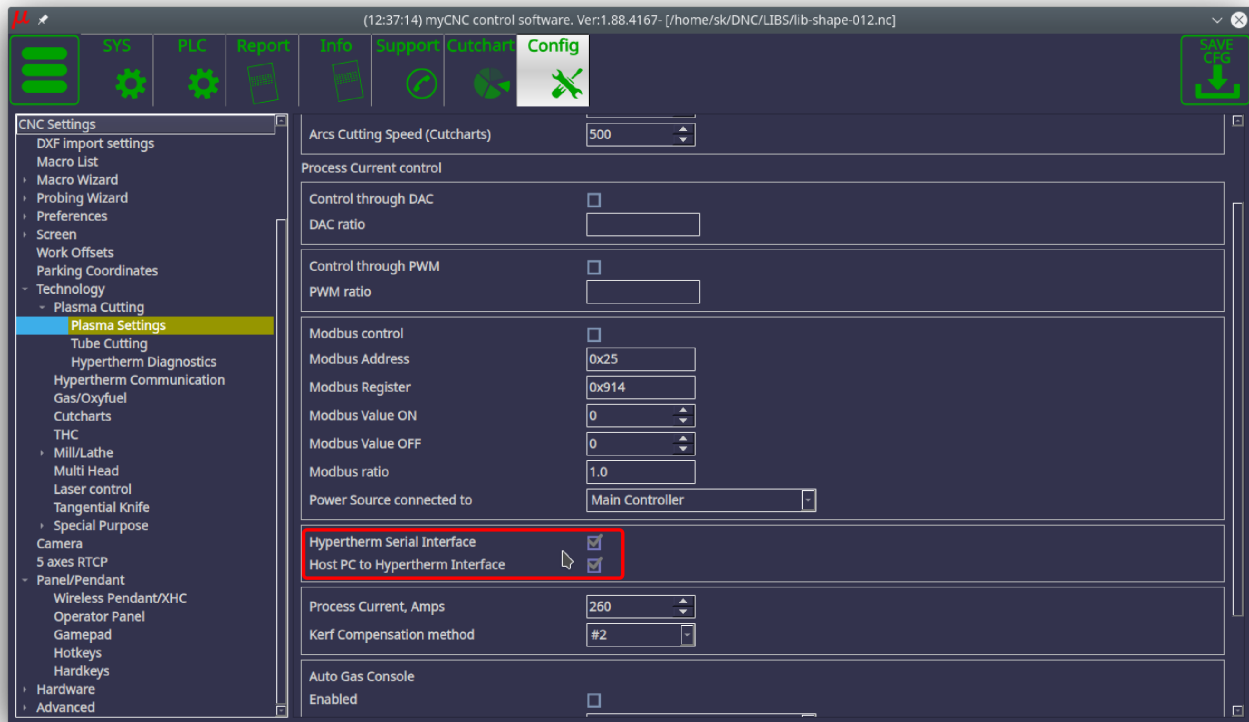
# Hypertherm Serial Communication

The general setup procedure to establish communication with a Hypertherm power source is as follows:

1) Communication between the myCNC controller and the Hypertherm power source is established through the channel reserved for the operator panel, therefore the connection parameters must be set in the *Panel / Pendant* → *Operator Panel* tab:



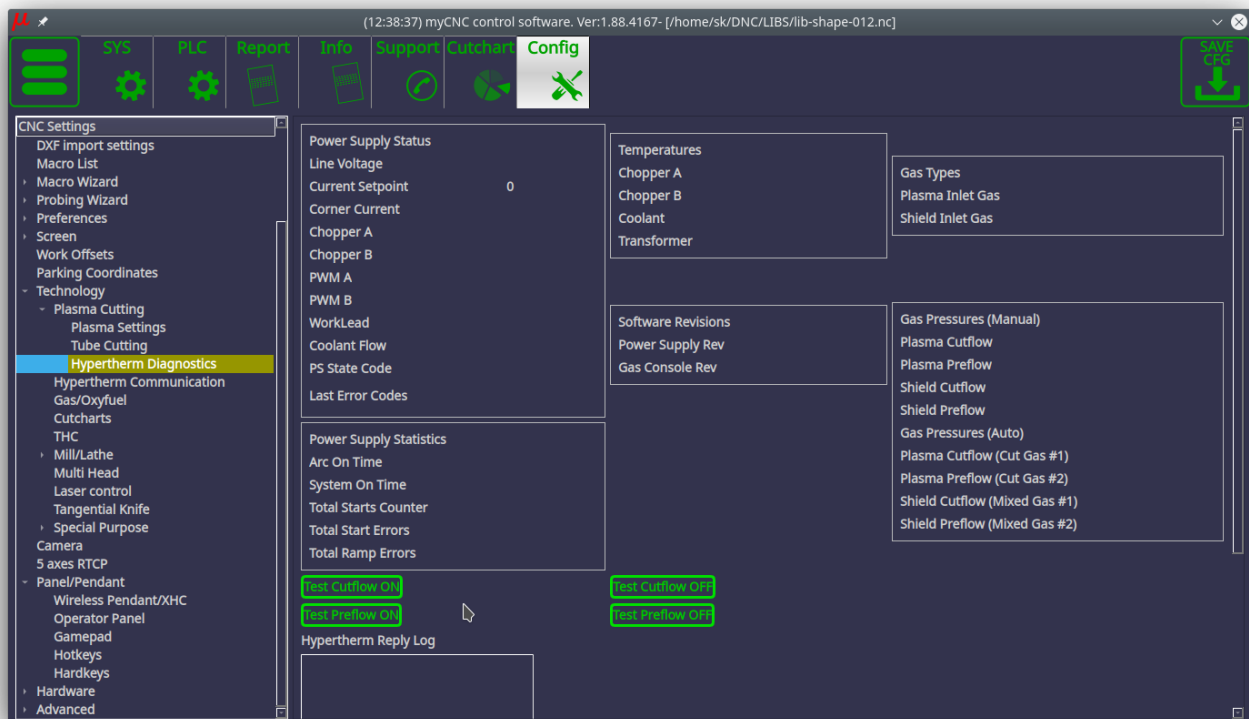
2) To establish communication, you must set the check marks for *Hypertherm Serial Interface* and *Host PC to Hypertherm Interface* to ON:



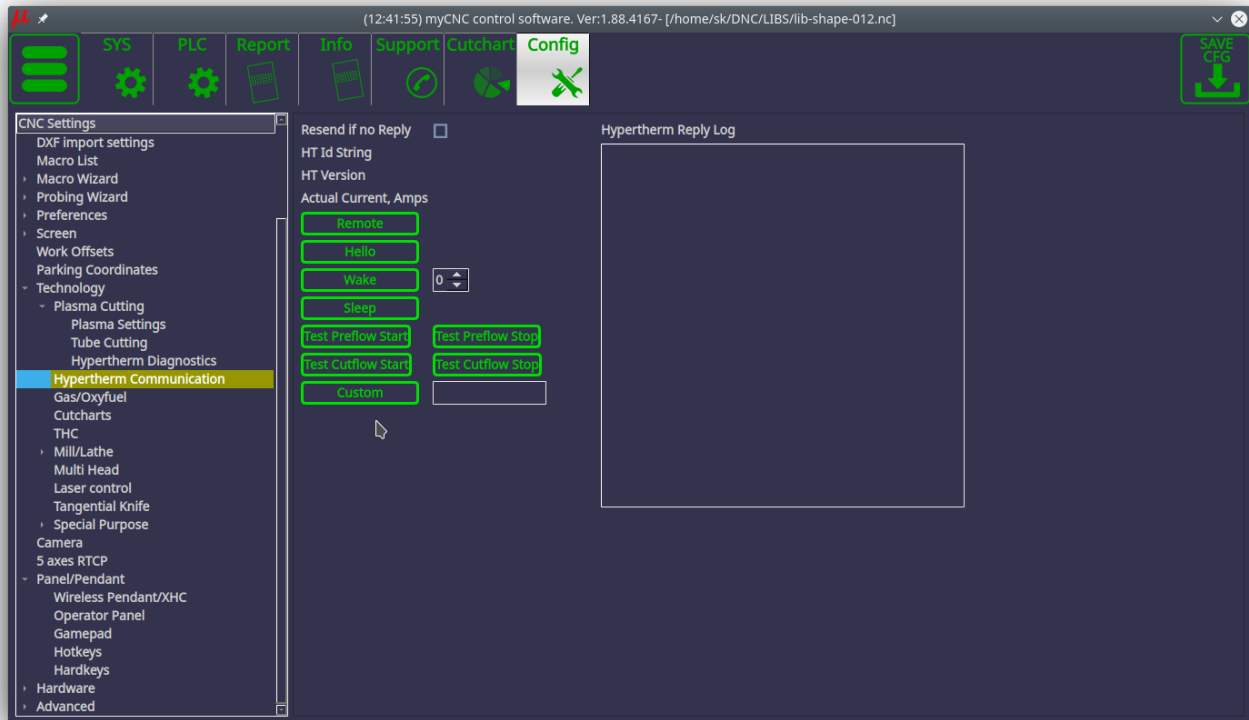
3) Save your settings and reload the software for the changes to take effect

4) At this point, you can check the connection in the Hypertherm Diagnostics window:

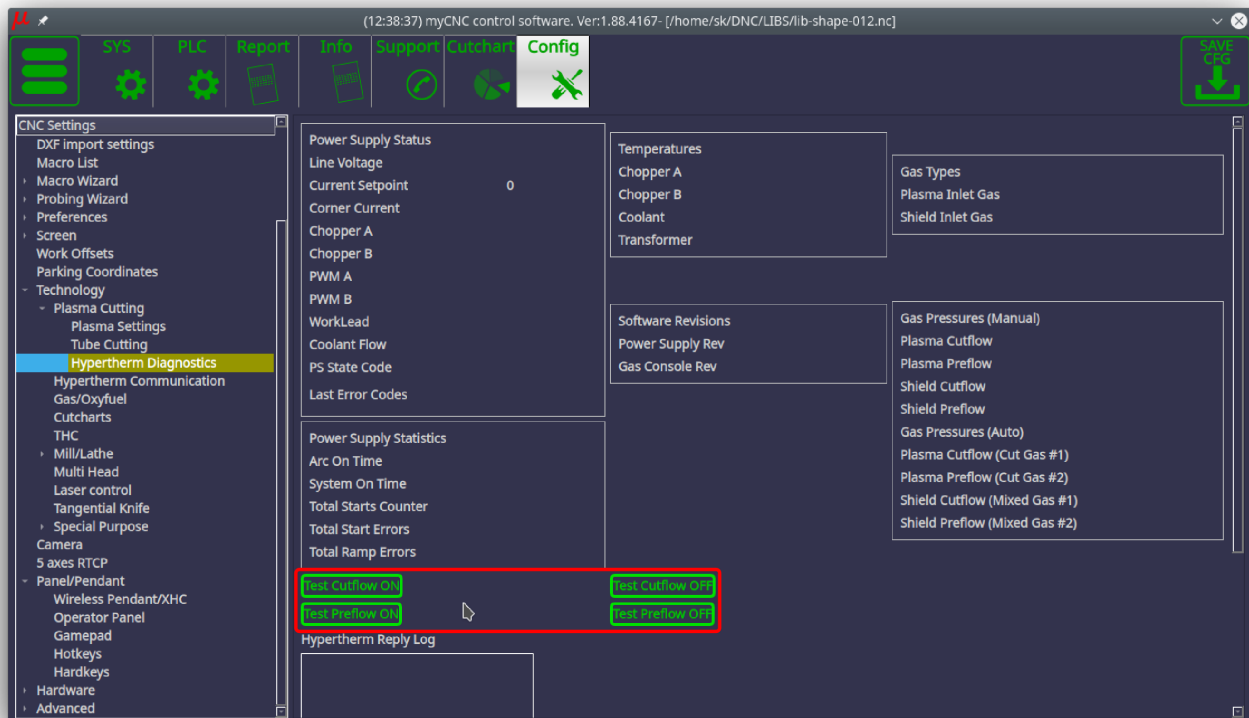
When this window is opened, the system requests information from the power source several times per second and, when receiving a response, will display this information in the corresponding fields:



Other test commands can be sent using buttons from the Hypertherm Communication window, with the responses from the power source being printed in the Log window:



In addition, you can manually send commands for test switching on and off gases using the following buttons in the Hypertherm Diagnostics tab:



At this point, the Hypertherm setup within myCNC should be complete.

From:  
<http://cnc42.com/> - **myCNC Online Documentation**

Permanent link:  
[http://cnc42.com/mycnc/hypertherm\\_serial\\_communication](http://cnc42.com/mycnc/hypertherm_serial_communication)

Last update: **2020/09/21 15:11**

